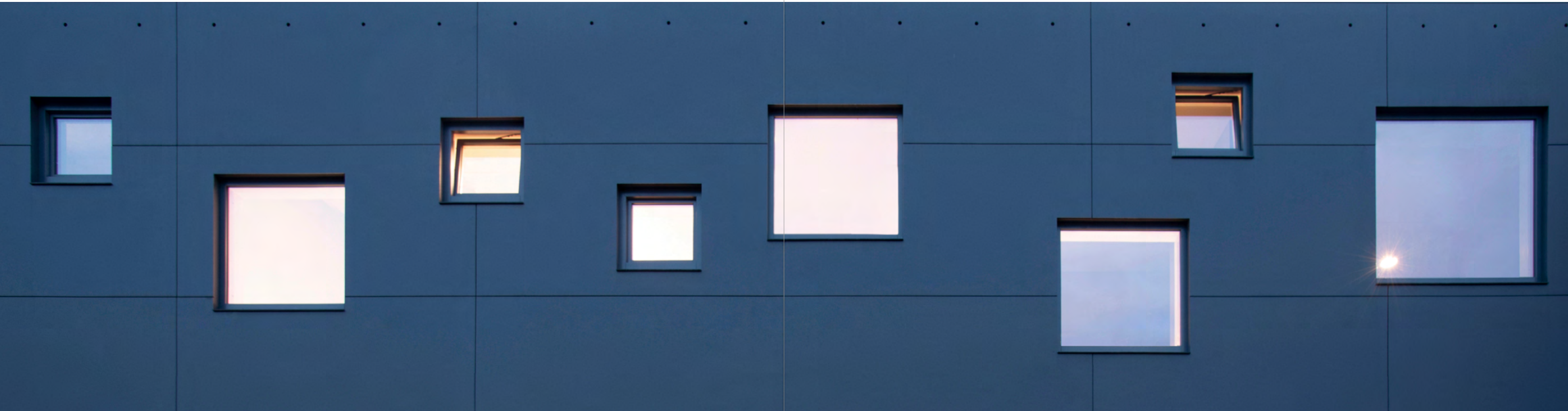


SWISSPEARL

Facades



NATURAL RANGE



Index

About Swisspearl

Material and sustainability	12-13
Tradition and strong values	14-15
Rear-ventilated facade system	16-17

Color Families

Natural	
Carat	20-25
Gravial	26-29
Vintago	30-33
Vintago Reflex	34-37
Avera	38-41
Reflex	42-45
Nobilis	46-49
Terra	50-53
Planea	54-57
Zenor	58-61

Designing Possibilities

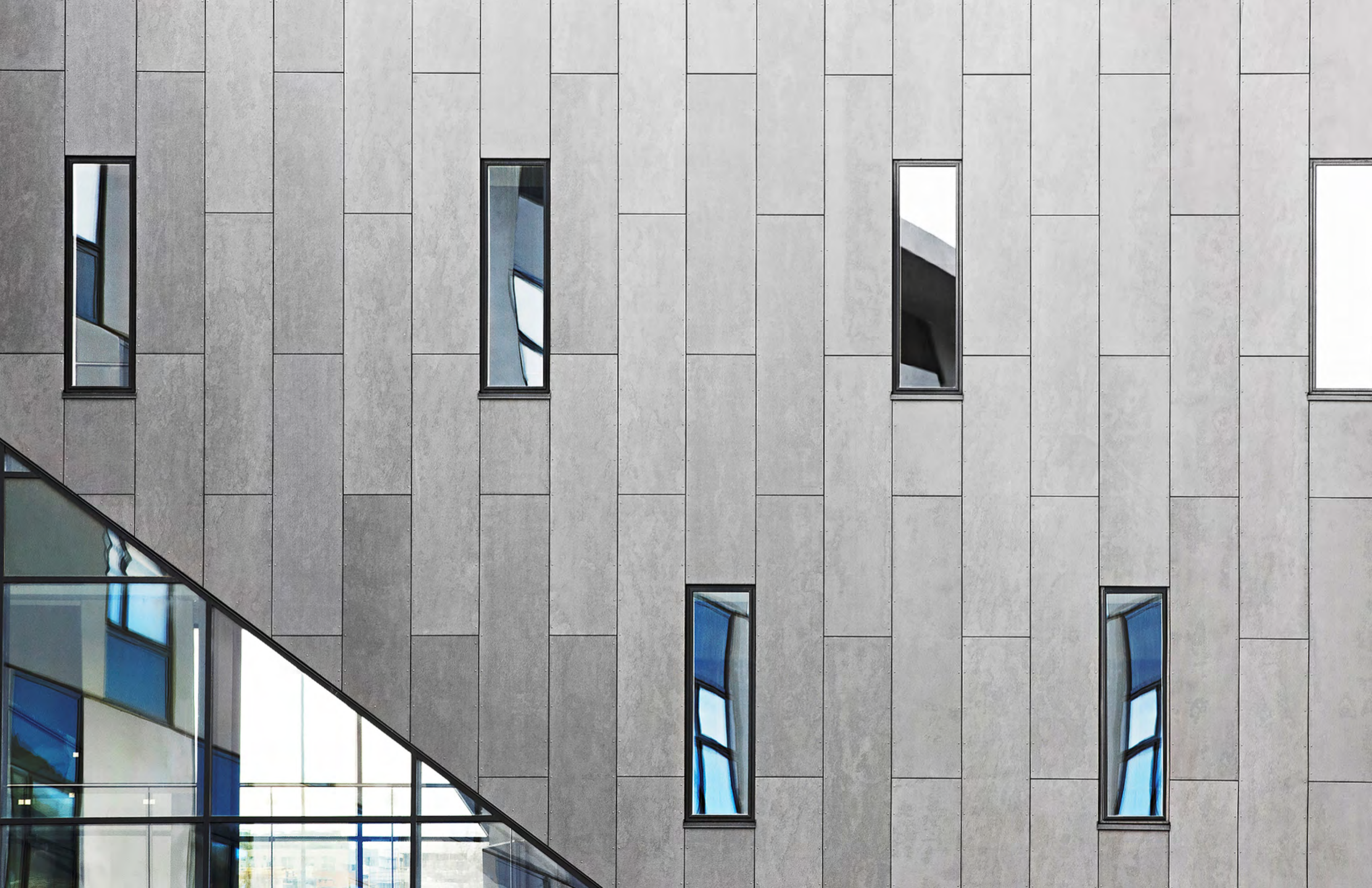
Freeform	64-65
Custom Cut	66-67
Engravings	68-69
Perforation	70-71

Service

Warranty and material properties	72
Advice	73







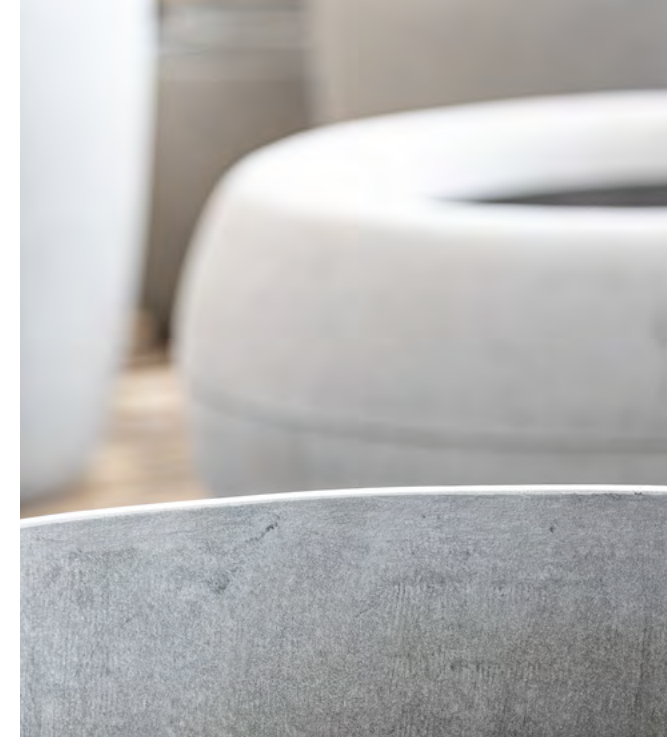


Respect for people and the environment



Fascination with fiber cement – a highly resistant and durable building material

Fiber cement has long been an excellent material for design and construction due to its wet formability and exceptional strength when dry. Its durability and reliability are achieved through a precise material composition that is subject to constant research and further development. The production process is a combination of many years of experience in traditional manufacturing and innovative additional developments based on the latest findings.



Our fiber cement consists of cement, pulp, water, plastic fibers, and air. The combination of these ingredients results in a durable building material that is also lightweight compared to other cement materials. Holding the material reveals its homogeneous nature and surface quality. Its appearance highlights the unique character and natural texture.



Fiber cement is an extremely versatile material that can be used in a variety of ways. Optimally coordinated raw materials and a consistently inventive spirit form the recipe for success of product that has remained on-trend for over 100 years, and has become an integral part of architecture.

Tradition and innovation – We build on strong values

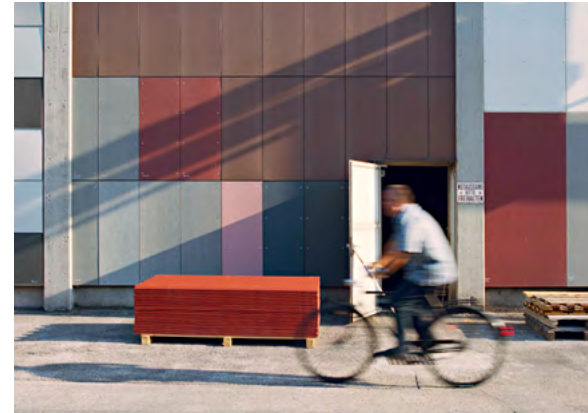


As a Swiss, family-owned company, we think in terms of generations and have been doing what we do best for decades: With curiosity, passion, and commitment, we create innovative and durable fiber cement products for facades, interior finishing, and gardens.

Today, the Swisspearl Group is headquartered in Niederurnen, in the heart of the Swiss Alps. One of the first production facilities for fiber cement was founded here in 1903. The success story of our fiber cement began in Vöcklabruck in 1894. The place where it was invented by Ludwig Hatschek.

Today, the traditional production process is combined with state-of-the-art technology. We are proud of our leading position in the innovation and technology of this material, which is used worldwide in the design of architecture and living spaces.

Swisspearl stands for Swiss quality – worldwide.



It is our goal to become number one in the field of high-quality fiber cement. By always aiming that little bit higher, with a mindset that is always ahead of the game, and achievements that always go a little further than others on the market, we transform living spaces into dream homes. However, there is much more to over 125 eventful financial years, namely pioneering spirit, expertise, and the courage to break new ground – for a stable future.

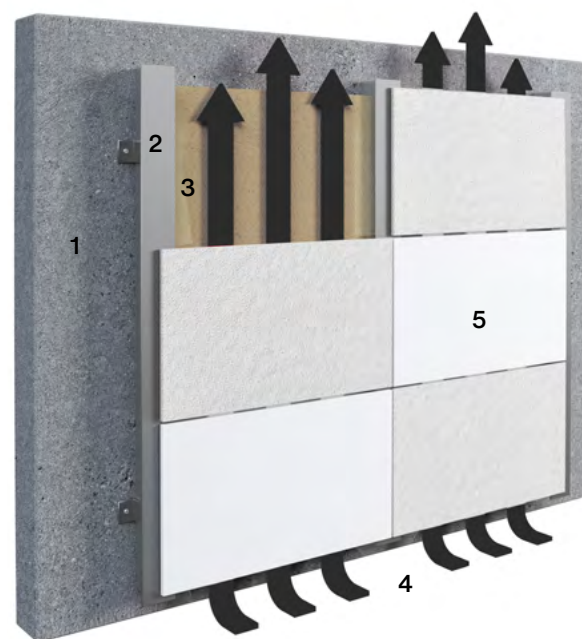


Every step counts in construction projects. This also applies to manufacturers. Thanks to the long tradition behind our group of companies, experienced employees are able to produce high-quality fiber cement products from optimally coordinated raw materials with expertise, precision, and craftsmanship. The interplay between tradition and innovation has made the use of fiber cement products possible in buildings all over the world for over 100 years.

Building for the long term with Swisspearl

The rear-ventilated mounted facade

With Swisspearl, you are choosing a premium supplier of rear-ventilated mounted facades. Numerous construction types and materials of the facade are available for selection. The rear-ventilated mounted facade is regarded as a high-quality and ecological variant. No other facade system can implement the requirements for heat and moisture protection, as well as fire and sound insulation, in such a simple and visually appealing way.



1 Supporting structure, 2 Substructure, 3 Thermal insulation, 4 Rear ventilation space, 5 Swisspearl fiber cement panels

Energy-efficiency

The intelligent layer structure of the rear-ventilated mounted facade provides a component especially suited for each function of the outer wall. Moisture cannot penetrate from the outside to the masonry and insulation, while the rear-ventilated space ensures optimal drying of the moisture coming from the inside. This increases energy efficiency and guarantees an ideal and healthy indoor climate all year round.

Durable and economical

A facade with Swisspearl fiber cement panels impresses above all with highly efficient thermal and weather protection and extremely easy maintenance. This ensures outstanding comfort and permanent functional reliability in the long term. Susceptibility to damage, which quickly leads to unpredictable costs, is thus reduced to a minimum. Swisspearl facades stand for lasting protection, comfort, and cost-effectiveness and guarantee a long-lasting, secure building shell for decades.

Mounting types

In addition to the selection of colors, formats, and surface structures, the design of facades also includes a choice of mounting methods for the facade panels. Different mounting methods allow for a variety of design options. Swisspearl facade panels can be mounted with both visible and invisible solutions. Swisspearl offers a complete system that includes the fiber cement panels and the corresponding mounting technology.



Visible mounting of the fiber cement panels with colored rivets

Visible mounting

Rivets or screws are used for visible mounting. These can be deliberately selected to accentuate the contrast or harmonize with the color of the facade panel. This creates vibrant contrasting or classically simple facades.



Invisible mounting with the Swisspearl Sigma 8 Pro system

Invisible mounting

We offer various options for the invisible mounting of Swisspearl facade panels, developed in-house by Swisspearl or in cooperation with our partners. Give the building shell an impressive and elegant appearance with an invisible facade mounting solution. The panels are mounted with anchors and brackets on the back so that the surface material of the fiber cement panels shines in its full glory from the front without visible rivets or screws.

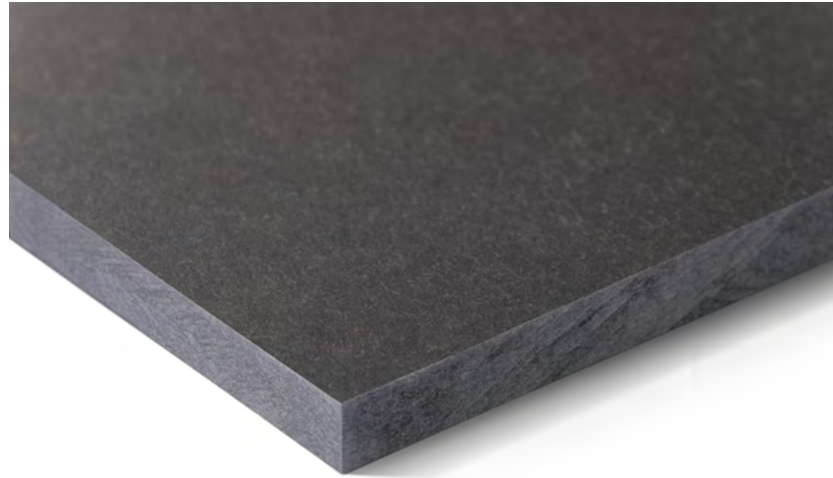


**SWISSPEARL
COLOR RANGE**

CARAT

Unique natural look and timeless beauty.
The translucent, slightly pigmented surface
adds to its expressive appearance.

CARAT



The naturally dried color line Carat creates clear expressiveness through a translucent, lightly pigmented surface. The throughout-coloring of the fiber cement panels creates monolithic and elegant-looking building envelopes.

The twenty shades of the Carat color line range from light to dark and from cool to warm shades, thus offering a particularly varied color spectrum. Carat is independent and simple and, at the same time, offers numerous color combinations.

Optionally, Carat is also available with a special HR coating that offers greater scratch resistance and protection against heavy soiling and graffiti.



House RnEve, Mönchhof, Austria. Architect: ad2 Architekten, Weiden am See, Austria. Photographer: Meraner & Hauser OHG/SNC, Bolzano, Italy.

Technical Data

Panels

The panel is colored through.
Coating: Translucent lightly pigmented

Panel format

Swisspearl Largo:
Maximum usable format 3,050 x 1,250 mm,
panel thickness 8.0 mm and 12 mm

For a detailed summary of the sizing and color options, please refer to our delivery program.

Mounting

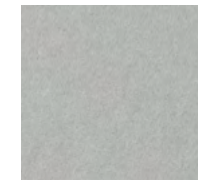
Visible on wooden substructure:
Bolts with painted head

Visible on metal substructure:
Blind rivets with painted head

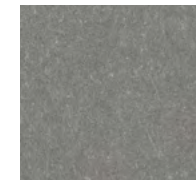
Invisible on metal substructure:
Undercut anchors

Technical Data

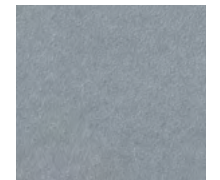
Detailed information can be found in the DIM - "Design and Installation Manual Largo."



Crystal 8010



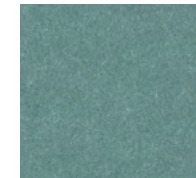
Granite 8060



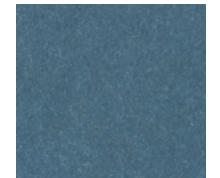
Granite 8061



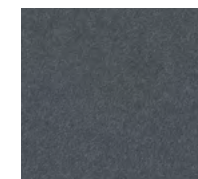
Granite 8062



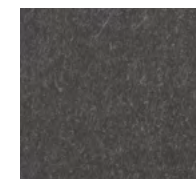
Jade 8053



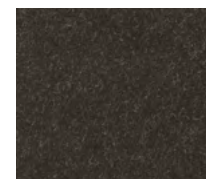
Azurite 8040



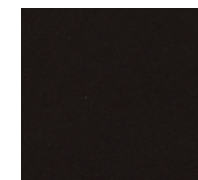
Anthracite 8021



Anthracite 8020



Anthracite 8023



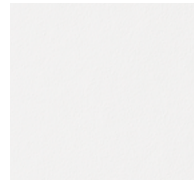
Anthracite 8024

Colors

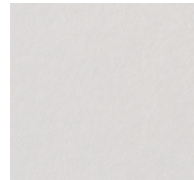
Twenty standard colors.

Special Coating Carat HR (optional)

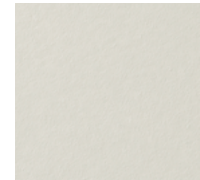
Carat HR (high-resistance) is a special transparent coating that has a high scratch resistance and offers protection against heavy soiling and graffiti. Carat HR is available in all Carat standard colors.



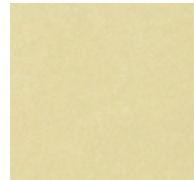
Ivory 8099



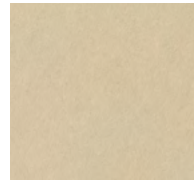
Ivory 8091



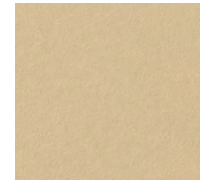
Ivory 8090



Limestone 8083



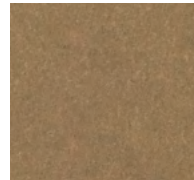
Sandstone 8000



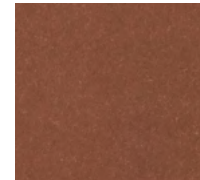
Sandstone 8002



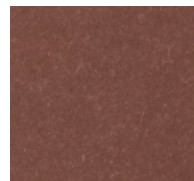
Amber 8075



Amber 8074



Coral 8034



Coral 8033



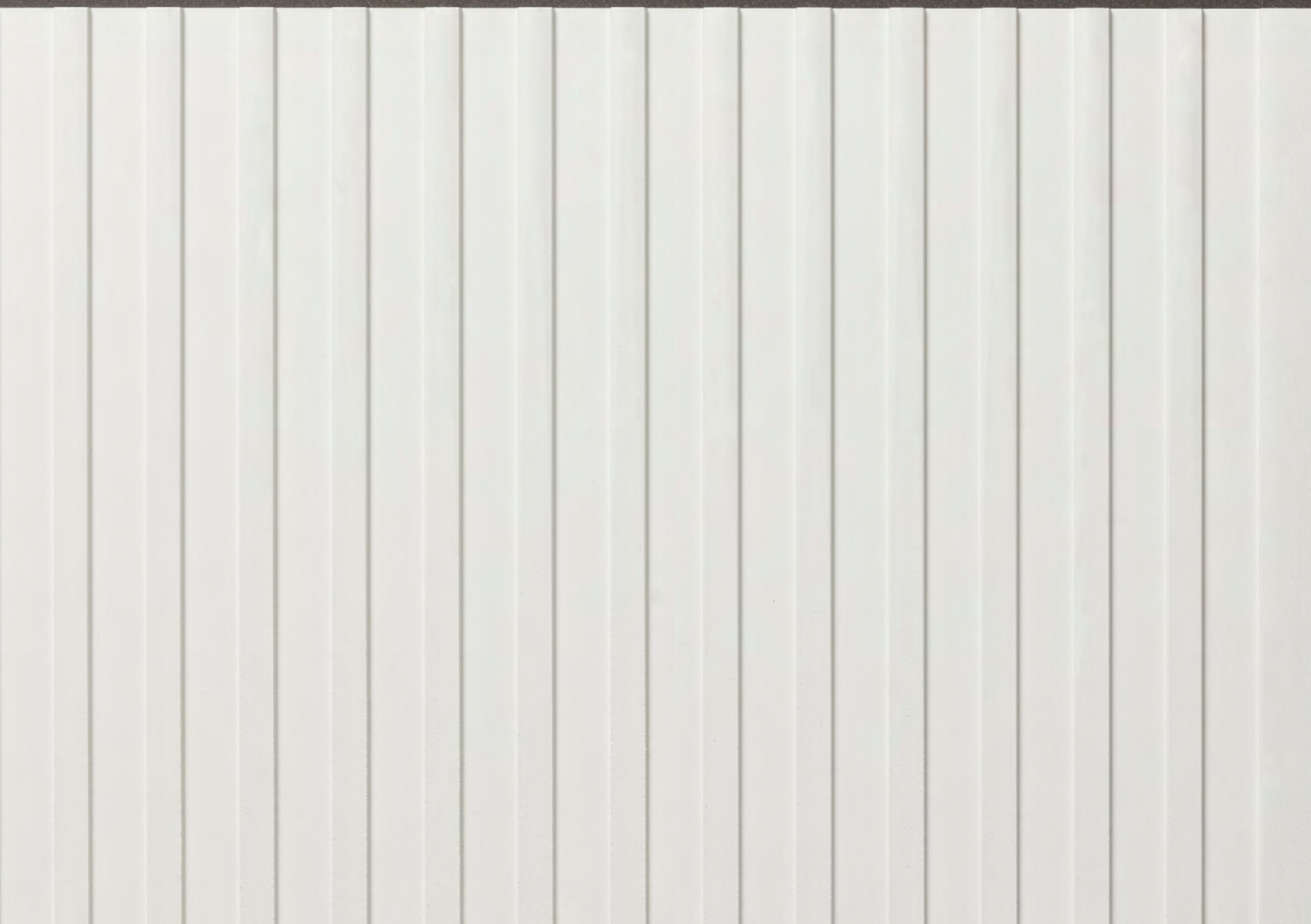
OMRRK National Museum, Budapest, Hungary. Architect: Narmer Építészeti Stúdió, Budapest, Hungary. Photographer: Meraner & Hauser OHG/SNC, Bolzano, Italy.



The OMRRK National Museum in Budapest was planned in an arrangement of four wings on the top two floors, running perpendicular to the main axis of the building. This strategy reduces the size of the building and allows for the design of spaces with natural light from two directions. The facades of the museum are clad in custom-colored, large-format Swisspearl panels.

GRAVIAL

Unique interplay between light and shadow. The straight, geometrically grooved surface offers countless possibilities for creating a special design accent.



GRAVIAL



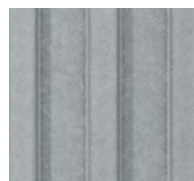
Gravial is a naturally dried fiber cement panel with a linear, milled surface structure and translucent coating. Depending on the time of day and the angle of view, it creates an impressive play of light and shadow. With the exception of one brown tone, the color line moves in soft gray tones from white to black.



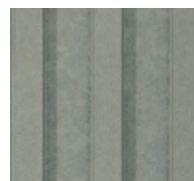
Ivory 3099



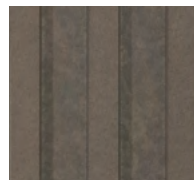
Ivory 3090



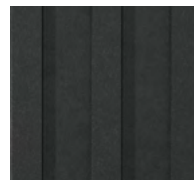
Crystal 125



Granite 624



Amber 723



Anthracite 3020

Technical Data

Panels

The panel is colored through or grey based.
Coating: Translucent pigmented

Panel format

Swisspearl Largo:
Maximum usable format
3,050 x 1,250 mm, panel
thickness 12 mm

For a detailed summary of the sizing and color options, please refer to our delivery program.

Colors

Six standard colours.

Mounting

Visible on wooden substructure:
Bolts with painted head

Visible on metal substructure:
Blind rivets with painted head

Invisible on metal substructure:
Undercut anchors

Technical Data

Detailed information can be found in the "DIM-Design and Installation Manual Gravial."



Fiches Nord, Lausanne, Switzerland, Architect: Züst Gübeli Gambetti Architektur und Städtebau AG, Zurich, Switzerland, Photographer: Roger Frei, Zurich, Switzerland.

VINTAGO

Naturally authentic, raw, vibrant,
and unique. The polished surface
underlines the purity of the fiber
cement panel.

VINTAGO



Vintago is a naturally dried fiber cement panel, which appeals with a sanded and slightly rough surface. Through the polishing process with a rough abrasive grit, the interior and the originality of the fiber cement board is discreetly carried to the outside. The resulting robust texture of the fiber cement panels disrupts homogeneous surfaces without being obtrusive.

Due to its coloration through the mixing of color pigments into the basic mass of the fiber cement panel, the Vintago color family is a good choice for special cuts and individual design possibilities for interiors and on the facade.

With light and dark shades of gray and brown, a white and a black shade, as well as colored shades of green, blue, and red, the Vintago color family offers a multi-faceted range. However, the rather cool tones share one thing: they authentically express the structure of the fiber cement created by the polished character.



MFH, Zuzwil, Switzerland. Architect: Trunz + Wirth AG, Henau, Switzerland. Photographer: Meraner & Hauser OHG/SNC, Bolzano, Italy.



Technical Data

Panels

The panel is colored through.
Coating: Transparent High-Resistant

Panel format

Swisspearl Largo:
Maximum usable format
3,050 x 1,250 mm, panel
thickness 8.0 mm

For a detailed summary of the sizing and color options, please refer to our delivery program.

Colors

Wide selection with ten standard colors. Deviations in the color shades of the different panels are a natural part of the production properties underlining the vibrant, expressive character of the material.

Mounting

Visible on wooden substructure:
Bolts with painted head

Visible on metal substructure:
Blind rivets with painted head

Invisible on metal substructure:
Undercut anchors

Technical data

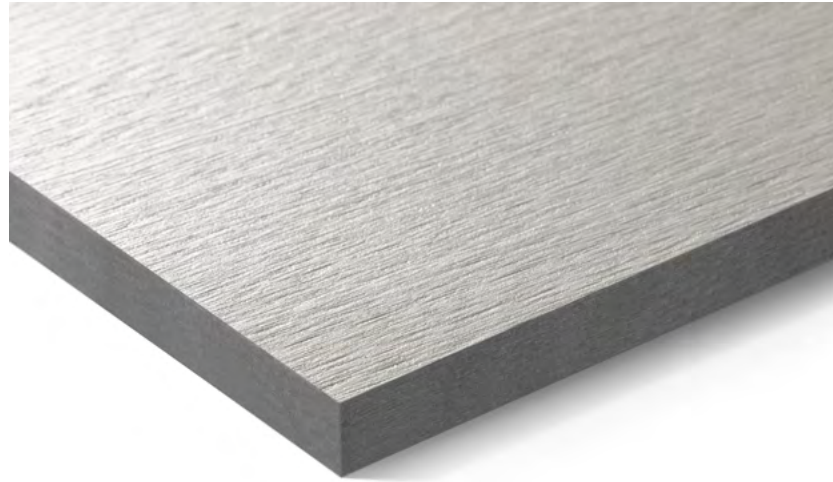
Detailed information can be found in the DIM – "Design and Installation Manual Largo."

VINTAGO - REFLEX

Raw, vibrant with a shiny appearance.
The polished surface combined with
a reflective surface gives a slightly raw
but vibrant, glossy appearance.



VINTAGO - REFLEX



The naturally dried and solid-colored color line Vintago-Reflex combines the dynamic surface textures of the two Swisspearl color lines Vintago and Reflex. The sanded, slightly rough fiber cement panel is simultaneously given a slightly shimmering character by the submixture of reflective pigments in the surface coating. This special composition gives facades and interiors a remarkably beautiful appearance.

The three shades white, silver, and black can be impressively combined with the Vintago and Reflex color lines, opening up completely new design possibilities.



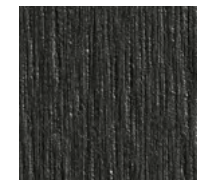
Inspiration atelier 522.



VIR 9292



VIR 9000



VIR 9221

Technical Data

Panels

The panel is colored throughout.
Coating: Iridescent, opaque

Panel format

Swisspearl Largo:
Maximum usable format
3,050 x 1,250 mm, panel
thickness 8.0 mm

For a detailed summary of the sizing and color options, please refer to our delivery program.

Colors

Three standard colors.

Mounting

Visible on wooden substructure:
Bolts with painted head

Visible on metal substructure:
Blind rivets with painted head

Invisible on metal substructure:
Undercut anchors

Technical data

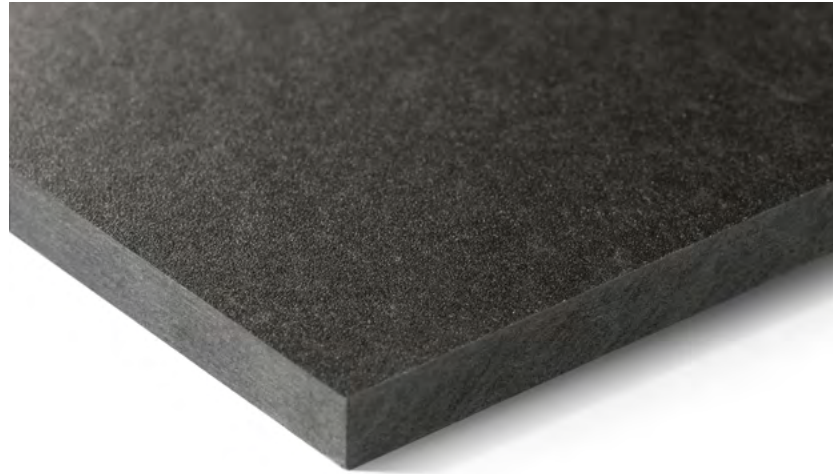
Detailed information can be found in the DIM - "Design and Installation Manual Largo."

AVERA

Authentic, vibrant appearance.
The transparent coating allows
the original natural appearance
of the fiber cement to shine through.



AVERA

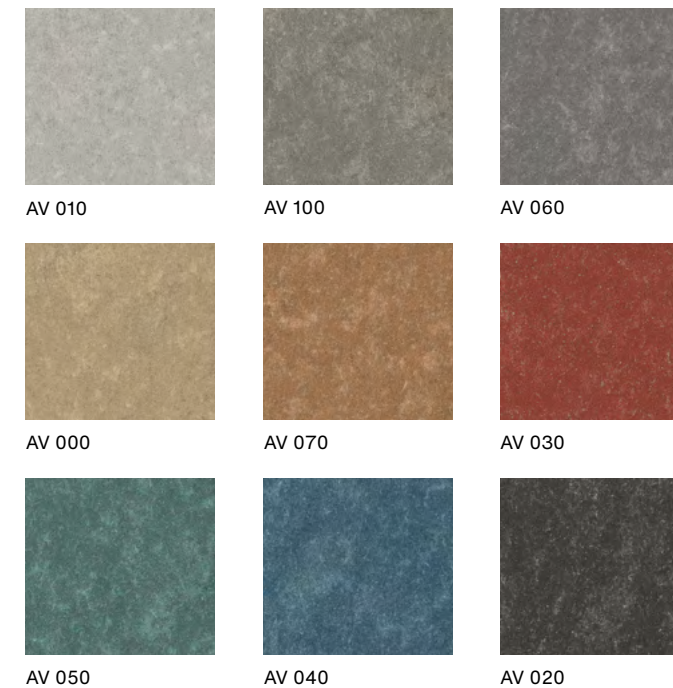


Avera is a naturally dried and colored-throughout fiber cement panel with a dynamic production process that gives it an unmistakably natural and authentic texture. The color range around Avera is composed of versatile and combinable shades that ideally bring out the cloudy look of the color line.

The highly resistant standard coating makes these panels particularly scratch-resistant and protects them from heavy soiling and graffiti. The transparent coating allows the natural appearance of the fiber cement to shine through, creating a lively surface look with varied texture and dynamic color tones.



House on Haliburton Lake, Ontario, Canada. Architect: +VG, Toronto, Canada. Photographer: David Whittaker Photographer Inc., Toronto, Canada.



Technical Data

Panels

The panel is colored through.
Coating: Transparent High-Resistant

Panel format

Swisspearl Largo:
Maximum usable format 3,050 x 1,250 mm,
panel thickness 8.0 mm

For a detailed summary of the sizing and color options, please refer to our delivery program.

Colors

Nine standard colors.
Deviations in the color shades of the different panels are a natural part of the production properties underlining the vibrant, expressive character of the material.

Mounting

Visible on wooden substructure:
Bolts with painted head

Visible on metal substructure:
Blind rivets with painted head

Invisible on metal substructure:
Undercut anchors

Technical data

Detailed information can be found in the DIM - "Design and Installation Manual Largo."

REFLEX

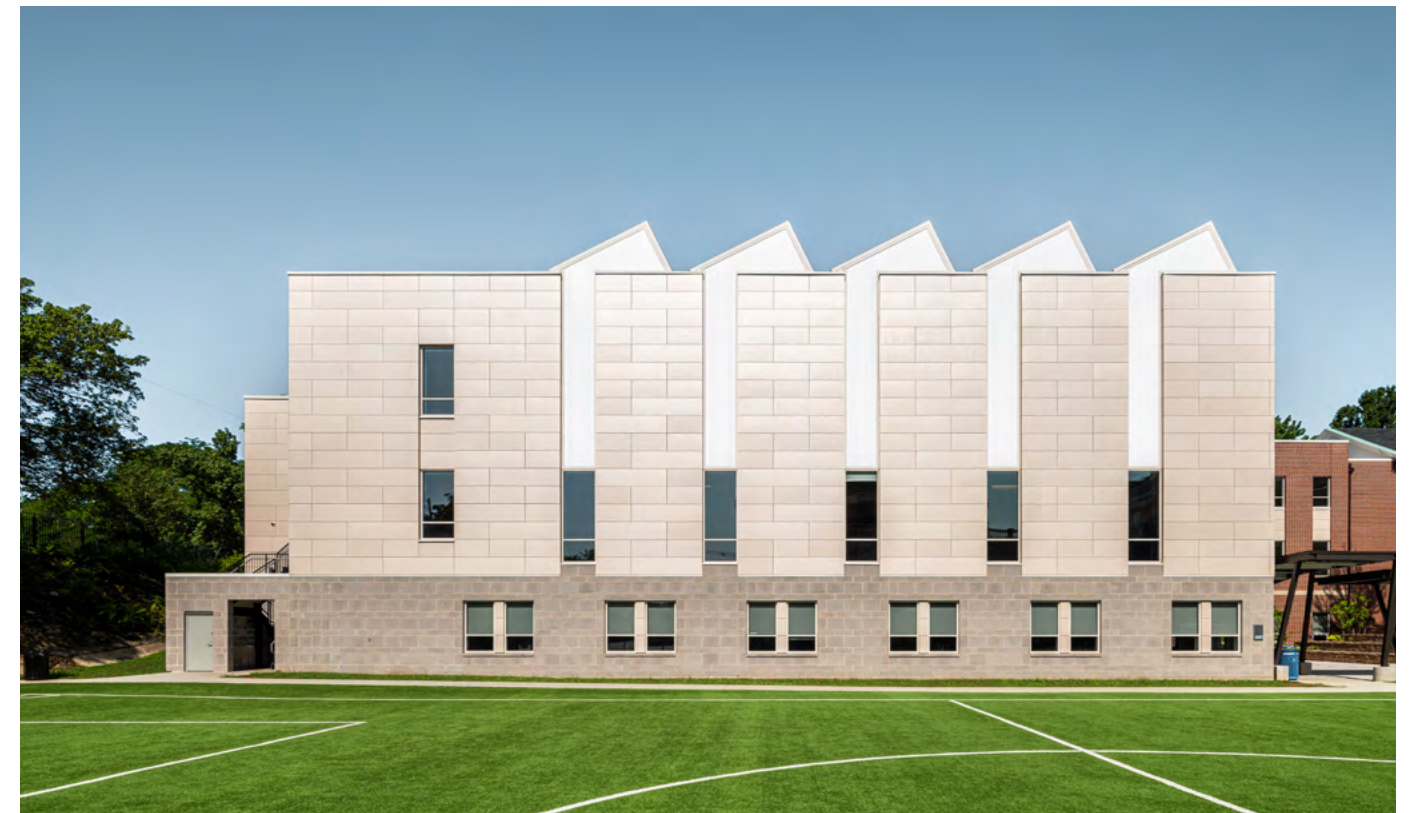
Shiny look with metallic effects.
The reflective surface coating
gives the panel an expressive and
shiny appearance.

REFLEX



Reflex is a throughout-colored, naturally dried fiber cement panel with a reflective surface coating, which creates a different return of the light. Depending on the viewing angle, this creates a restrained, shimmering look on the surface.

The color world around Reflex ranges from seven shades of black and gray, each with a slightly green tonality, to two warm white tones and three bronze red-brown tones. With its nuanced reflective pigments, Reflex presents itself with an independent and noble character.



DC International School, Washington, USA. Architect: Perkins Eastman DC, Washington, USA. Photographer: Brycen Fischer, Baltimore, USA.



Technical Data

Panels

The panel is colored through.
Coating: Iridescent, opaque High-Resistant

Panel format

Swisspearl Largo:
Maximum usable format
3,050 x 1,250 mm, panel
thickness 8.0 mm and 12 mm

For a detailed summary of the sizing
and color options, please refer to
our delivery program.

Colors

Twelve standard colors.

Mounting

Visible on wooden substructure:
Bolts with painted head

Visible on metal substructure:
Blind rivets with painted head

Invisible on metal substructure:
Undercut anchors

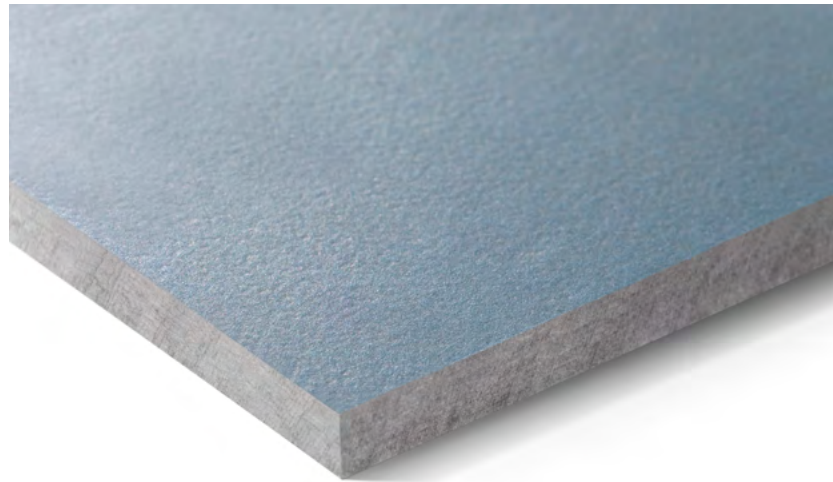
Technical data

Detailed information can be found
in the DIM - "Design and Installation
Manual Largo."

NOBILIS

Natural elegance through authenticity.
The translucent, slightly pigmented
surface highlights the fiber cement texture
in all its natural beauty and elegance.

NOBILIS



Nobilis is a gray panel with a translucent, lightly pigmented surface that highlights the fiber cement texture in all its natural beauty and elegance. The color family combines 13 shades of brown, blue, green, and gray, with both warmer and cooler hints of gray. The sophisticated shades of Nobilis create an effortless aesthetic and elegant lightness.

As a naturally dried and lightly pigmented fiber cement panel, Nobilis is restrained and precisely because of this becomes an aesthetic eye-catcher. Whether deliberate combinations of soft gray tones or expressiveness through unity – Nobilis lends simple elegance to facades and interiors.



House XL, Pot na Črnilu, Slovenia. Architect: SONO Arhitekti, Lokavec, Slovenia. Photographer: Meraner & Hauser OHG / SNC, Bolzano, Italy.



Technical Data

Panels

The panel is colored through in gray.
Coating: Translucent lightly pigmented

Panel format

Swisspearl Largo:
Maximum usable format 3,050 x 1,250 mm,
panel thickness 8.0 mm; 12 mm panels only
available in the format 2,510 x 1,250 mm

For a detailed summary of the sizing and color options, please refer to our delivery program.

Colors

Thirteen standard colors.

Special Coating Nobilis HR (optional)

Nobilis HR is a special transparent coating that has a high scratch resistance and offers protection against heavy soiling and graffiti. Nobilis HR is available in all Nobilis standard colors.

Mounting

Visible on wooden substructure:
Bolts with painted head

Visible on metal substructure:
Blind rivets with painted head

Invisible on metal substructure:
Undercut anchors

Technical data

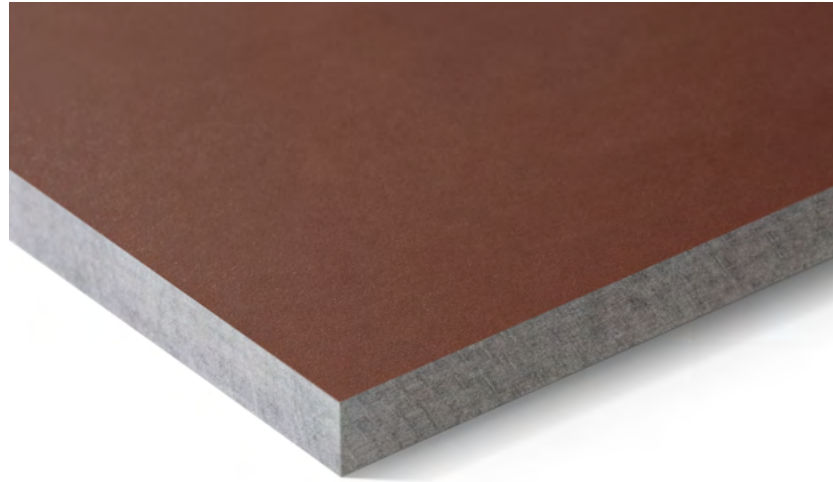
Detailed information can be found in the DIM – “Design and Installation Manual Largo.”

TERRA

Earthy, warm atmosphere.

The finely coordinated colors are reminiscent of earthy tones and give the building shell an earthy, natural look.

TERRA

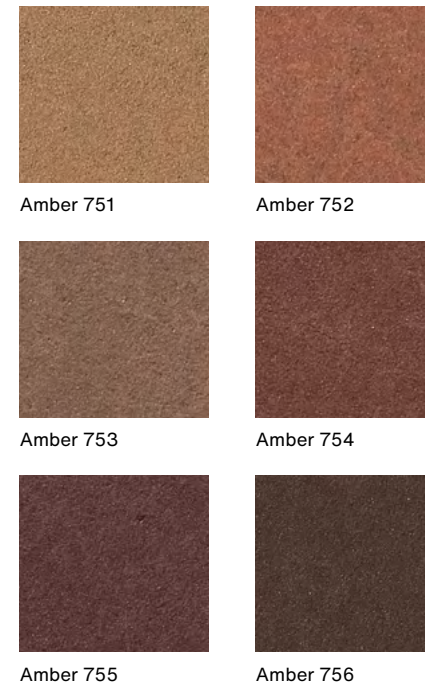


Terra is a naturally dried gray fiber cement panel with a translucent, strongly pigmented surface. The name Terra represents the epitome of the character for the earthy warm tones.

Without noticeably large color gradations, Terra manages to go from a light to a very dark brown with six tones, while preserving the harmony of the color family. The finely balanced colors are reminiscent of earth tones and give the building envelope an earthy, natural look. Terra allows buildings to merge with their natural surroundings, giving them an approachable warmth and comfort without losing their strength and expressiveness.



Inspiration atelier 522.



Technical Data

Panels

The panel is colored through in gray.
Coating: Translucent strongly pigmented

Panel format

Swisspearl Largo:
Maximum usable format 3,050 x 1,250 mm,
panel thickness 8.0 mm; 12 mm panels
only available in the format 2,510 x 1,250 mm

For a detailed summary of the sizing and color options, please refer to our delivery program.

Colors

Six standard colors.

Mounting

Visible on wooden substructure:

Bolts with painted head

Visible on metal substructure:

Blind rivets with painted head

Invisible on metal substructure:

Undercut anchors

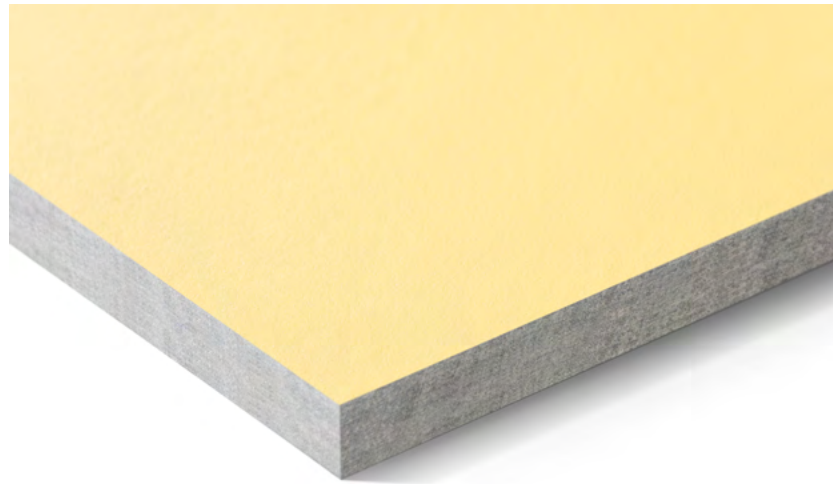
Technical data

Detailed information can be found in the DIM
- "Design and Installation Manual Largo."

PLANEA

Fresh, colorful creativity. The matt, smooth surface emphasizes the clear, light, and intense colors and thus creates a particularly expressive effect.

PLANEA



Planea is a naturally dried gray fiber cement panel with an opaque, strong surface coating. Strong, vibrant and particularly color-intensive are also the shades of the color family, which is composed of two sunny yellows, two refreshing greens, and four pastel to dark reds. Fine gradations of white and light gray and a strong shade of black form an exciting addition to the color palette and allow for strong contrasts or gentle accentuation.

The matt, smooth surface highlights the clear and intense colors, making them particularly expressive. Planea can be used to create a color-intensive building envelope that brings a bright contrast to the surroundings.



Bergi Music and Art Primary School, Garkalnes Novads, Latvia. Architect: Ozola & Bula, Riga, Latvia. Photographer: Meraner & Hauser OHG/SNC, Bolzano, Italy.



Technical Data

Panels

The panel is colored through in gray.
Coating: Opaque

Panel format

Swisspearl Largo:
Maximum usable format 3,050 x 1,250 mm,
panel thickness 8.0 mm and 12 mm

For a detailed summary of the sizing and color options, please refer to our delivery program.

Colors

Eleven standard colors.
Special colors available upon request.

Mounting

Visible on wooden substructure:
Bolts with painted head

Visible on metal substructure:
Blind rivets with painted head

Invisible on metal substructure:
Undercut anchors

Technical data

Detailed information can be found in the DIM - "Design and Installation Manual Largo."

ZENOR

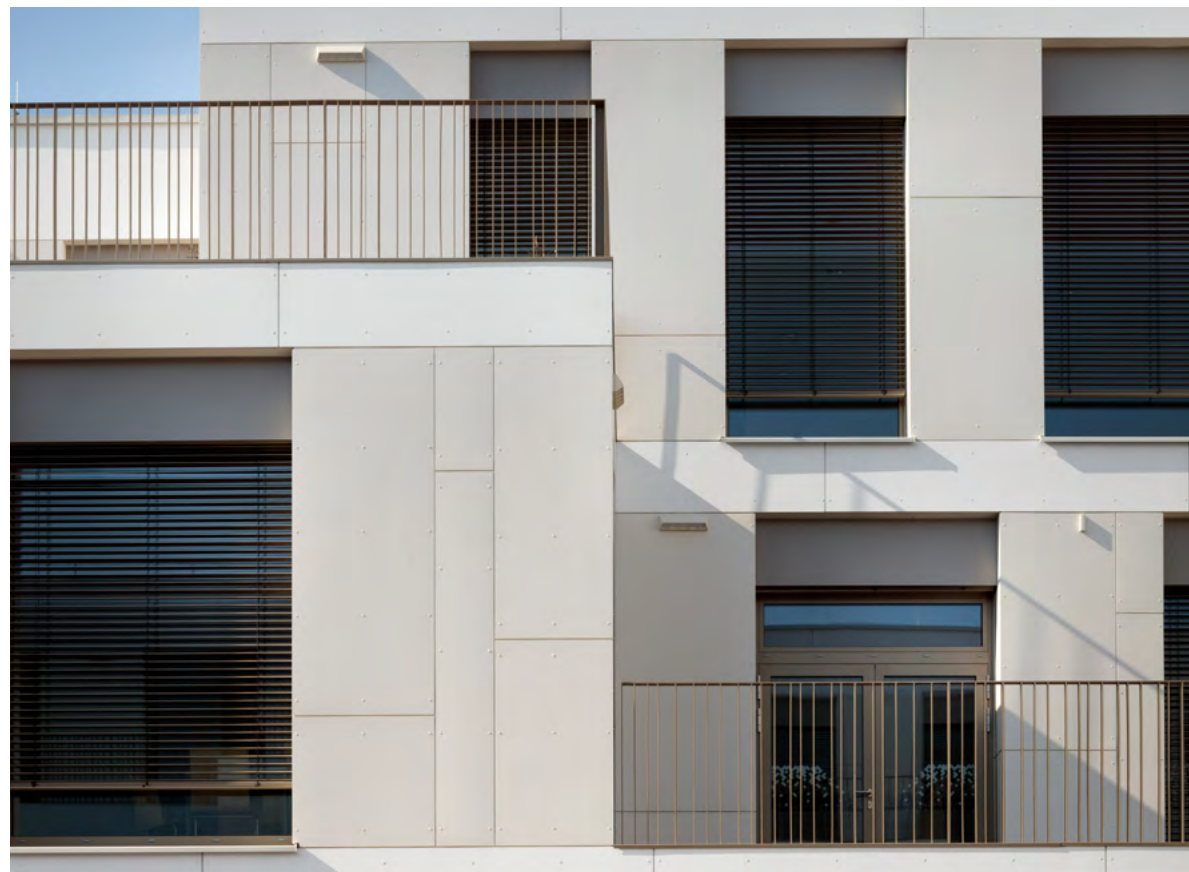
Simple elegance.

The selected range offers
cost-effective, yet high-
quality implementation.

ZENOR



Zenor is a large-format fiber cement panel with an opaque coating. The selected color range offers cost-effective, yet high-quality implementation from production to assembly. All-round protection for building shells with simple elegance.



AHS Wien West, Vienna, Austria. Architect: Shibukawa Eder Architects / FP Architekten, Vienna, Austria. Photographer: Kurt Kuball, Vienna, Austria.



Technical Data

Panels

The panel is colored through in a similar shade to the surface.
Coating: Opaque

Panel format

Swisspearl Largo:
Maximum usable format
3,050 x 1,250 mm, panel thickness
8.0 mm and 12 mm

For a detailed summary of the sizing and color options, please refer to our delivery program.

Colors

Sixteen standard colors.

Special Coating Zenor HR (optional)

Zenor HR is a special transparent coating that has a high scratch resistance and offers protection against heavy soiling and graffiti. Zenor HR is available in all Zenor standard colors.

Mounting

Visible on wooden substructure:
Bolts with painted head

Visible on metal substructure:
Blind rivets with painted head

Invisible on metal substructure:
Undercut anchors

Technical data

Detailed information can be found in the DIM - "Design and Installation Manual Largo."

The design possibilities resulting from the versatile range of our surfaces and colors can be supplemented by special finishes or surface treatments. These additional options, such as perforating, engraving, or other special designs, give every building an exclusive and special visual effect.

DESIGNING
POSSIBILITIES



Freeform

More than right angles: Free shapes add a new dimension to the scope of design.

Thanks to the high formability of the freshly mixed material, fibre cement can be used to create free shapes that open up unimagined possibilities in the facade. Whether organic bodies, curved lines, inclined surfaces, or free-flowing facade cladding in textile look – complex shapes can be achieved far beyond the conventional. Of course, our free forms offer all the advantages of the material.



Custom Cut

Customized variety of shapes: Individually customized elements for free facade design.

Unconventional building formations and facade designs can be created with individual cuts. Special geometric shapes and structures break straight-lined consistency and create exclusive and unique design options in special patterns. To enable as many ideas as possible to be turned into reality, we offer an individual cut for facades with special structures.

For facade designs in a special cut, the panels are cut with precision and delivered to the construction site in the exact order to enable seamless and precise assembly.

HALL 1



LOU



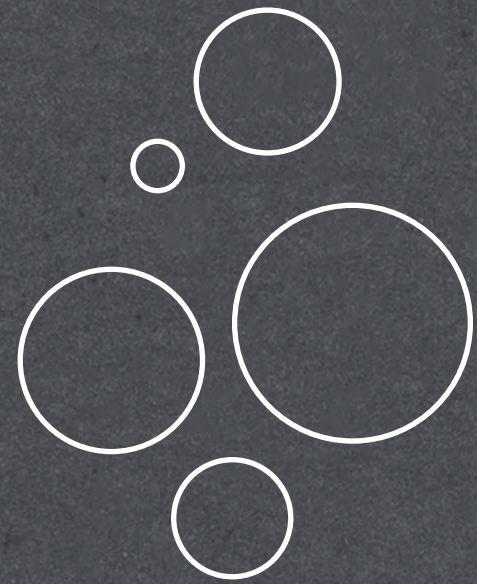
Engraving

Defining impressions: With engraved elements, shapes and patterns can be integrated directly into the facade – from fine details to large-scale motifs.

Geometric shapes, individual patterns, company logos or image motifs can be engraved on fibre cement panels. The engravings can appear within a single panel, change from one panel to another, or run across multiple panels to create a larger pattern. The structural feasibility of each proposed design must comply with the technical requirements. As a guideline, engraving depth is 1.5 mm (8.0 mm panel) or up to 4.0 mm (12 mm panel).

Engraved panels are available in Carat, or other color lines upon request.

HALL 2



Perforation

Aesthetic One-Offs: Facades with perforated panels are impressive and can be used in a variety of ways.

Perforations add a fascinating appearance to the facade or interior wall. They let natural light into the building, connect two worlds, and break out of the usual design. Holes, slits, and other perforations can be used to create unique effects. Perforated panels can also be functional, such as sliding shutters, wind shelters, partitions, sound absorption, or as a part of special lighting concepts. They can also be purely decorative by creating an overall look with many small perforations. As a guideline, the perforated area may be up to 18%.

Perforated panels are available in Carat, Nobilis, Terra, and Planea. Other color lines are available upon request.

Service

Warranty

Our products are manufactured to the highest quality standards. Production is subject to constant quality controls. This includes tests in third-party facilities, as well as in our in-house laboratories. If delivered products do not provide the specified performance, the warranty is valid, which covers the function of the panels and accessories. The warranty assumes that the instructions in the latest edition of the DIM – Design and Installation Manual have been followed.

Material properties

The printed color shades shown may differ from the original color shades. The sample panels should be used for the exact identification and color coordination of neighboring building parts. Fiber cement panels owe their unique character to natural ingredients, among other things. Slight variations between the different production batches can therefore not be ruled out.

Differences in texture and color between the individual panels are a natural part of the production characteristics and underline the vibrant character of the facade effect. Such color differences are not covered by the warranty.

We are here for you

With comprehensive consulting and service offers, we specifically address the needs of building owners, architects, and planners in order to jointly develop qualified solutions. We support you with comprehensive, expert advice, detailed documentation, technical manuals, and the Swisspearl Architecture Magazine, which has become a renowned publication.

Our high-quality fiber cement products combine outstanding quality and durability to create solutions for aesthetic building envelopes and valuable living spaces. Our dedicated and skilled employees are always there for you, your ideas, and questions. We look forward to implementing joint projects.



Inspiration from the Swisspearl Architecture Magazine

Numerous construction projects are carried out with Swisspearl products around the world every year. Architecture can and must do a lot. Climate change and the importance of sustainable construction are a challenge for everyone involved in the planning and realization of a building.

The building envelope of the future enables maximum energy efficiency. With the rear-ventilated facade made of fiber-cement panels, Swisspearl offers an environmentally-friendly building shell. In our Swisspearl Architecture Magazine, we present architecturally unique and outstanding construction projects around the globe every year.

Get inspired – [swisspearl.com](https://www.swisspearl.com)







Swisspearl Group AG

Eternitstrasse 3
8867 Niederurnen
Switzerland
info@swisspearl.com

swisspearl.com