

**SWISSPEARL**

# Swisspearl Plank & Swisspearl Panel



## Swisspearl Plank & Swisspearl Panel

### Installation

#### Table of Contents

Product Information_____	2	Framing and Clearances_____	13
Self-ventilating facade_____	3	Fastening_____	14
Range_____	4	Installation Methods_____	15
Accessories_____	6	Care and Maintenance_____	20
Profile Use_____	8	Painting_____	21
Storing and Handling_____	11	Health & Safety_____	21
Cutting and Sealing_____	12		



# Product Information

### Eliminate maintenance and moisture problems

Swisspearl Plank and Swisspearl Panel are made of materials which consist of non-toxic, inorganic raw materials. This means that they remain unaffected by the presence of moisture during and after installation. Swisspearl Plank products are fibre cement based planks and panels. Fibre cement is a modern building material made from natural and environmentally friendly raw materials. With more than 90 years experience in the manufacture of fibre cement, Swisspearl ensures a sustainable product that incorporates all the advantages of fibre cement.

### Quality

All products are CE marked and manufactured to meet, or exceed, the specifications outlined in the EN 12467:2012+A1:2016 Fibre-cement flat sheets, Category A2.

Swisspearl fibre cement plank and panel are vapour permeable products which are resilient to the toughest weather conditions experienced around the world. The products consist of grey cement and cellulose filler reinforced with specially selected fibres. Fibre cement absorbs and releases moisture without affecting the durability, strength or performance of the product. All products resist both rot and fungal growth and can withstand considerable fluctuations in weather and climate conditions. Adding to this, Swisspearl Plank and Swisspearl Panel are non-combustible and offer a fire protection of A2-s1,d0 meaning they will never contribute to fire.

### Paints

Swisspearl Plank and Swisspearl Panel come with a painted surface. An automated painting process seals each piece for maximum resistance to exterior exposure which is backed by a Swisspearl 15 year warranty. We offer a broad spectrum of pre-finished design possibilities and special colours are available upon request.

Colour Code	Colour name
CP 010	Agate Grey
CP 020	Natural Clay**
CP 030	Pebble Grey
CP 040	Granite Grey
CP 050	Beige Grey
CP 080	Basalt Grey
CP 150	Anthracite Grey
CP 180	Signal Black
CP 210	Pure White
CP 260	Oyster White
CP 280	Silk Grey
CP340	Copper Brown**
CP360	Nut Brown**
CP 370	Oxide Red
CP 380	Red Brown
CP 510	Light Ivory
CP 600	Seafoam
CP680	Fir Green**
CP760	Coastal Blue**
CP999	Primed*

For RAL / NCS colours, go to [www.swisspearl.com](http://www.swisspearl.com)  
Please note that 100% colour matching is not possible, paint must be toned locally.

### Notes

- 0 = Grey
- 1 = Black
- 2 = White
- 3 = Red
- 5 = Yellow
- 6 = Green
- 7 = Blue
- 9 = Ready for paint finishing

Colour Gloss: Flat 5 - 10

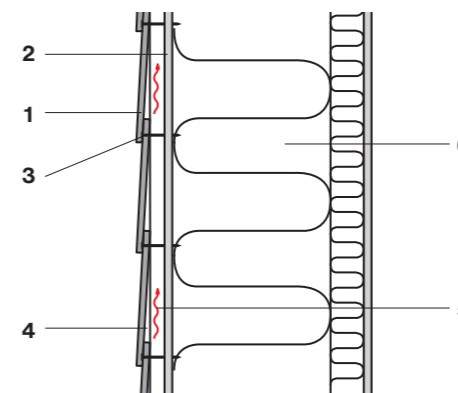
\* CP 999 = Product has been coated with an acrylic primer and are delivered "ready for paint" within a 6 months period.  
\*\*Available to special order, extended lead times apply.

# Self-ventilating facade

The self-ventilating facade is a physical construction which contributes to reducing temperature variations in the wall throughout the year. Sunlight is reflected in the summertime, and the dry insulation reduces heat loss in cold seasons. At the same time the construction ventilates interior condensation.

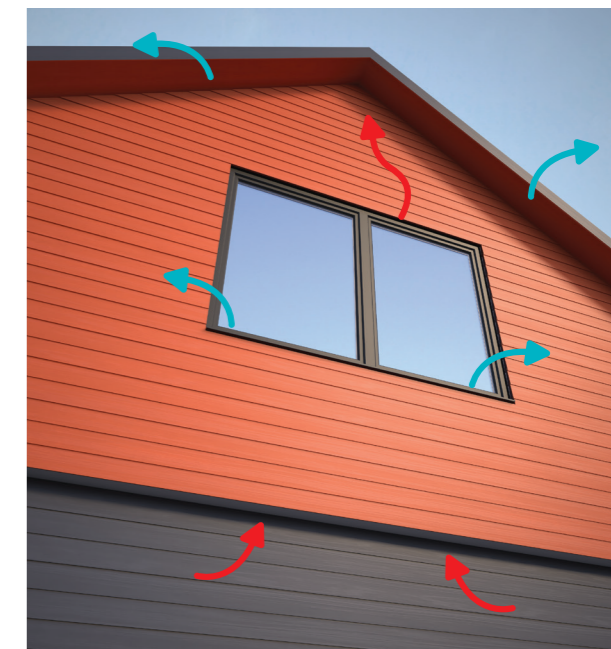
The cavity is ventilated by vent gaps at the bottom and top letting moisture evaporate naturally. If the facade system is not ventilated, it does not allow any moisture to evaporate; which might lead to mould, fungi, etc. on systems without rear ventilation.

Cladding with Swisspearl products must always be carried out as a ventilated facade with a min 20mm distance between the cladding and the sheathing or blockwork. However, in special situations (e.g. high rise buildings), local regulations may demand a larger ventilation gap. Inlet and outlet openings must have a cross section of least 100cm<sup>2</sup>/m.



- 1. Swisspearl Plank 8mm
- 2. Swisspearl Windstopper 9mm
- 3. Fixing
- 4. Batten min 20mm
- 5. Ventilated area
- 6. Light construction

It must be ensured that there is free passage for ventilation at the bottom and top of a structure as well as ventilation under and over windows/doors etc.

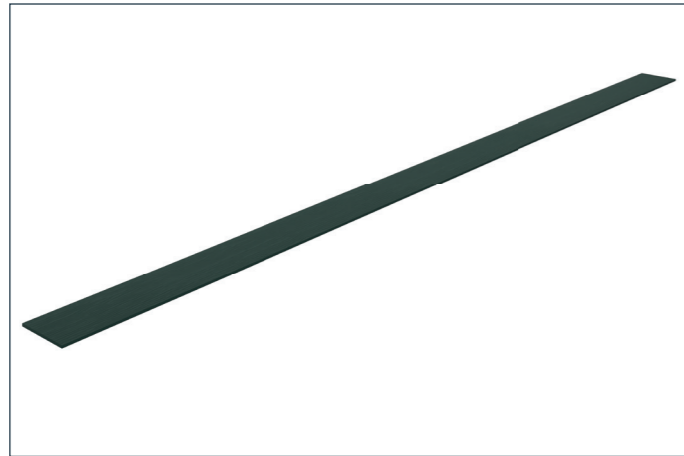


This passage must be a minimum of 10mm in the top and bottom or equal to 100mm per m<sup>2</sup>. If grids or similar are used, the openings must equal 100cm<sup>2</sup> per linear meter.

Swisspearl offers several profiles that make it easy to create elegant solutions in the bottom and top of the cladding as well as around doors and windows.

# Range

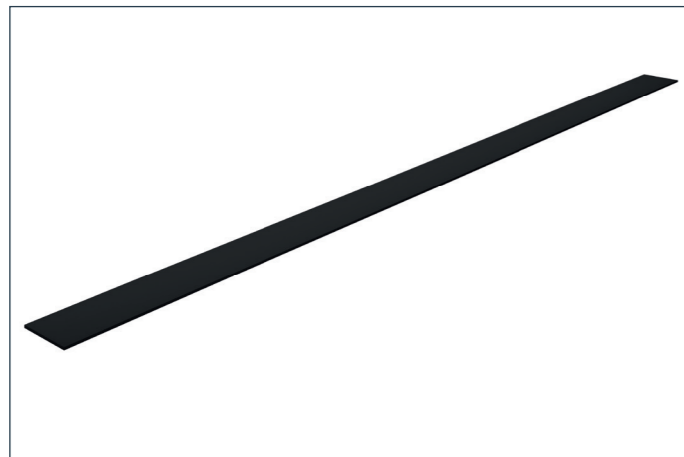
## Swisspearl Plank



### Properties

Length	3600mm
Width	180mm
Thickness	8mm
Weight pcs	7,75kg
Surface	Cedar
Coverage per m <sup>2</sup> (Including overlap)	1,85 pcs
Fixings per m <sup>2</sup> (Framing fixing centres 600mm)	12,8 pcs

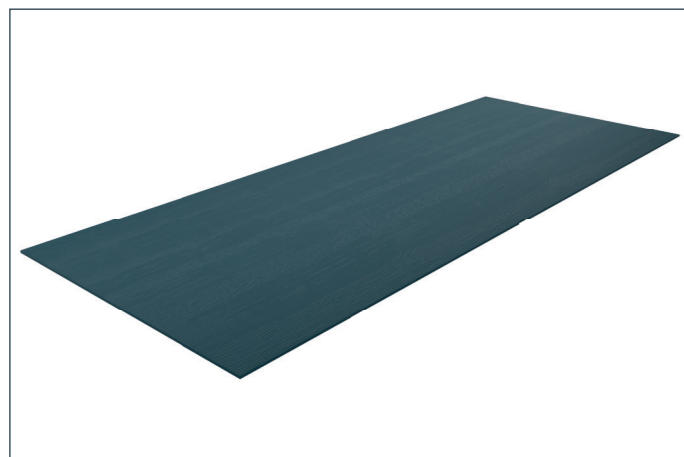
## Swisspearl Plank Smooth



### Properties

Length	3600mm
Width	180mm
Thickness	8mm
Weight pcs	7,75kg
Surface	Smooth
Coverage per m <sup>2</sup> (Including overlap)	1,85 pcs
Fixings per m <sup>2</sup> (Framing fixing centres 600mm)	12,8 pcs

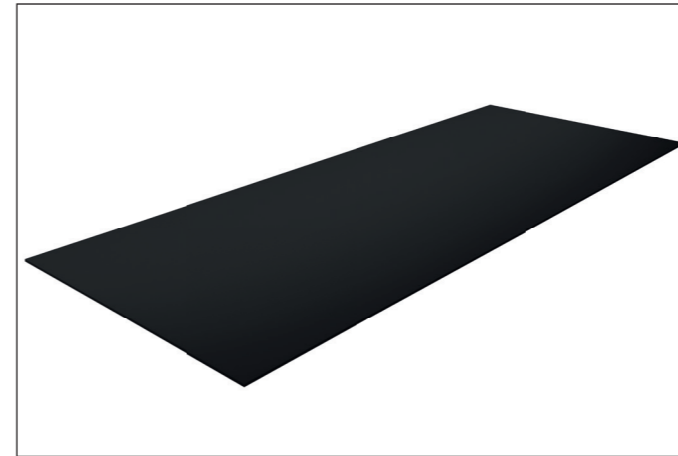
## Swisspearl Panel



### Properties

Length	3050mm
Width	1220mm
Thickness	8mm
Weight pcs	44,59kg
Surface	Cedar
Coverage per m <sup>2</sup>	0,27 pcs
Fixings per m <sup>2</sup> (Framing fixing centres 600mm)	6,7 pcs

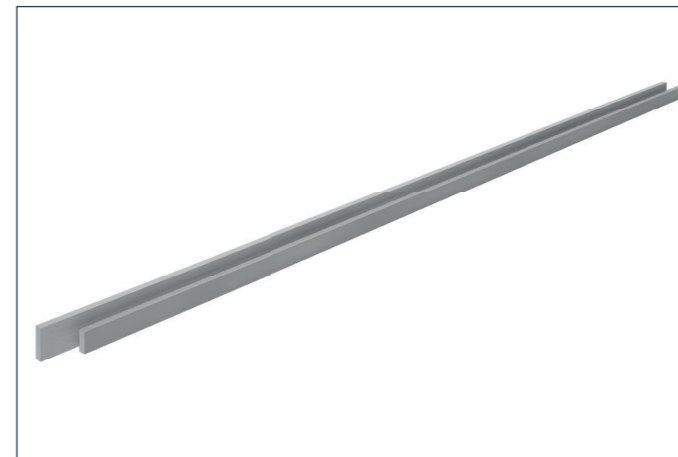
## Swisspearl Panel Smooth



### Properties

Length	3050mm
Width	1220mm
Thickness	8mm
Weight pcs	44,59kg
Surface	Smooth
Coverage per m <sup>2</sup>	0,27 pcs
Fixings per m <sup>2</sup> (Framing fixing centres 600mm)	6,7 pcs

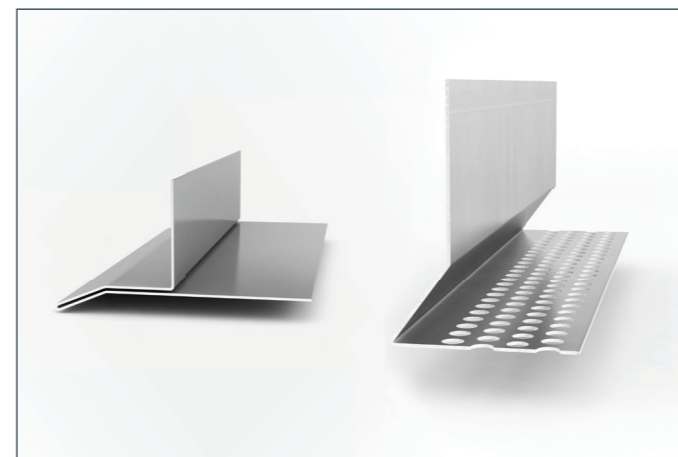
## Swisspearl FC Trim Reversible



### Properties

Length	3650mm
Width	65 / 90mm
Thickness	25mm
Weight pcs	6,8 / 9,4kg
Surface	Cedar & Smooth

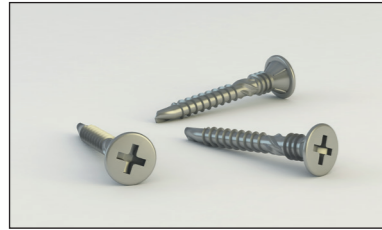
## Swisspearl Alu Profiles



### Properties

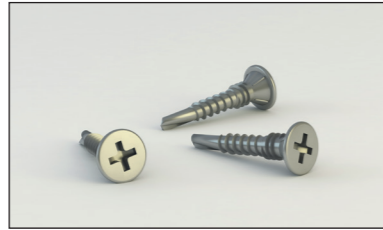
Length	3000mm
Width	Varies
Thickness	1mm
Weight pcs	Varies
Surface	Aluminium
Fasteners per m (nail distance fixing centres 600mm)	1,7 pcs

## Accessories



### Swisspearl 38 Wood Screw

3.9×38 mm Zytex GX – For hidden fixing on timber battens. Also available for auto feed screwdrivers



### Swisspearl 27 Steel Screw

3.9×27 mm Zytex GX – For hidden fixing on steel battens. Also available for auto feed screwdrivers



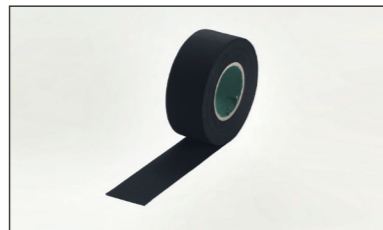
### Swisspearl Facade Wood Screws

4.5×41 mm A2 – For visible fastening on timber battens. Available in all colours



### Swisspearl Facade Steel Screws

4.8×35mm A2 - For visible fastening on steel battens



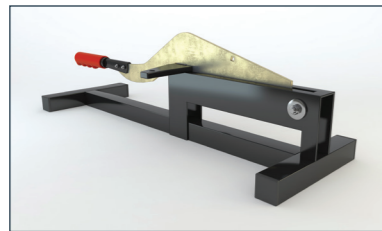
### Swisspearl EPDM Flat 0.8 × 45 / 95mm

To protect battens from water



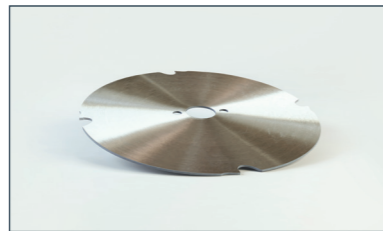
### Swisspearl Plank Acrylic Paint 0.5L

100% Acrylic Latex paint available in all colours



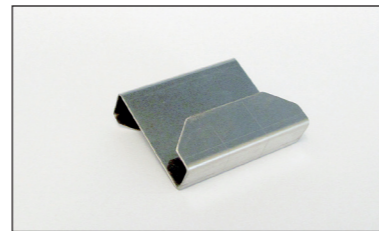
### Swisspearl Mechanical Shear

Dust free cutting of fibre cement up to 30cm long and 8mm thick



### Swisspearl Plank Circular Blade

Fibre cement blade for circular saw  
Ø160×2.2×20mm



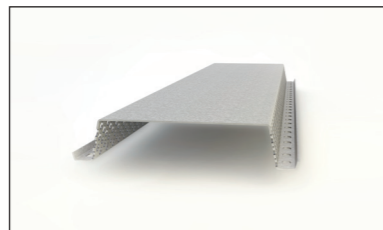
### Swisspearl Plank Guide

Guide for fixing a small amount of planks



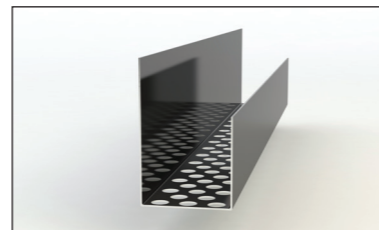
### Swisspearl Gecko Gauge

Acting as a second set of hands to measure and support the next plank for fastening



### Swisspearl Mounting profile 70 / 100

25×70/100mm Horizontal ventilation 1mm steel profile

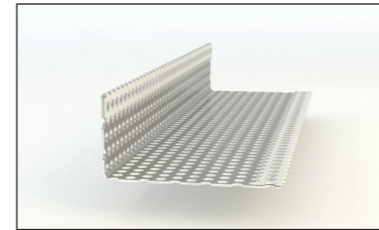


### Swisspearl Ventilated Wall Profile 40

25×40mm Horizontal ventilation start-end 1mm steel profile

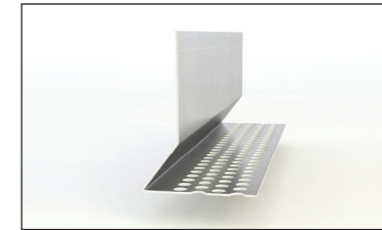
## Accessories

For a quick overview of profile use, see the next pages



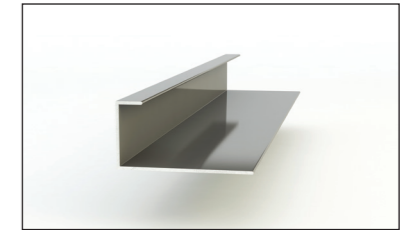
### 1. Swisspearl Ventilated Profile

22×50mm steel start/end profile for panels and planks



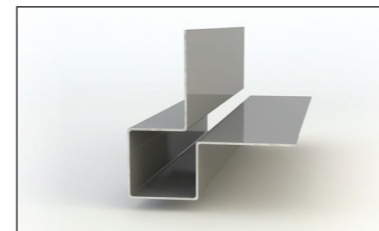
### 2. Swisspearl Start Ventilation Profile

25×48mm aluminium start profile for planks



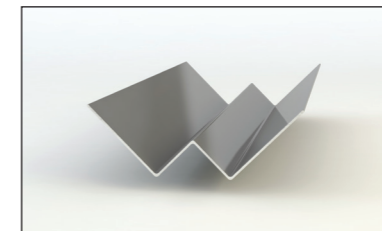
### 3. Swisspearl End Profile

20×40mm coloured aluminium profile for vertical finishing



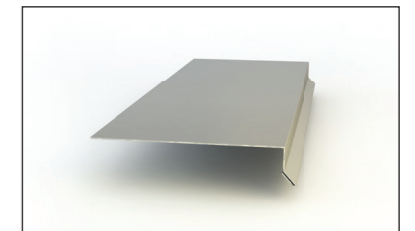
### 4. Swisspearl External Corner Large

25×35×35mm coloured aluminium profile for 90° angle



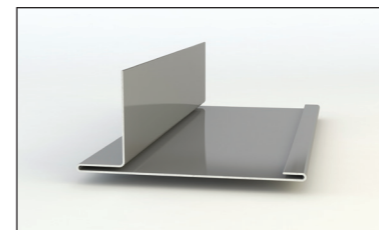
### 5. Swisspearl Internal Corner Profile

20×35×35mm coloured aluminium profile for 90° angle



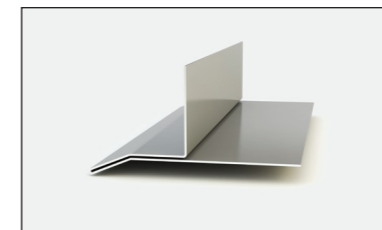
### 6. Swisspearl Window Sill Profile

25×125mm coloured aluminium external sill profile for horizontal finishing



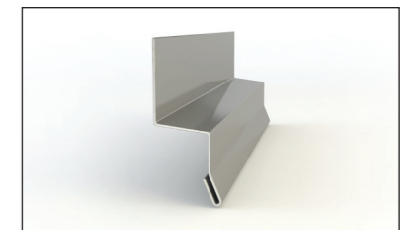
### 7. Swisspearl Vertical Trim Large

40×21×79mm coloured aluminium trim around doors and windows



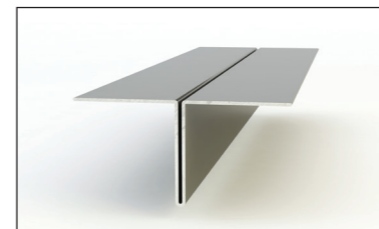
### 8. Swisspearl Horizontal Trim Large

40×50×40mm coloured aluminium trim around doors and windows



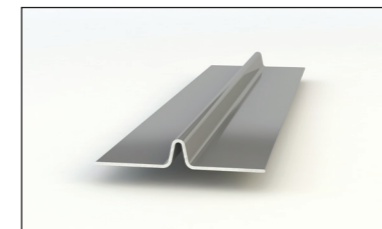
### 9. Swisspearl Drip Large

20×30×25mm coloured aluminium trim



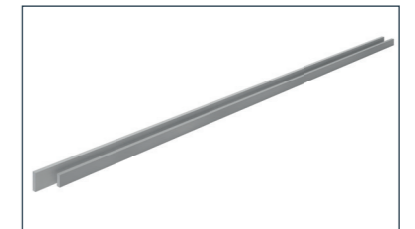
### 10. Swisspearl Vertical T Profile

25×30×30mm coloured aluminium trim for vertical joining of planks



### 11. Swisspearl Caulking Profile

7×50mm aluminium profile for “invisible” joining of panels

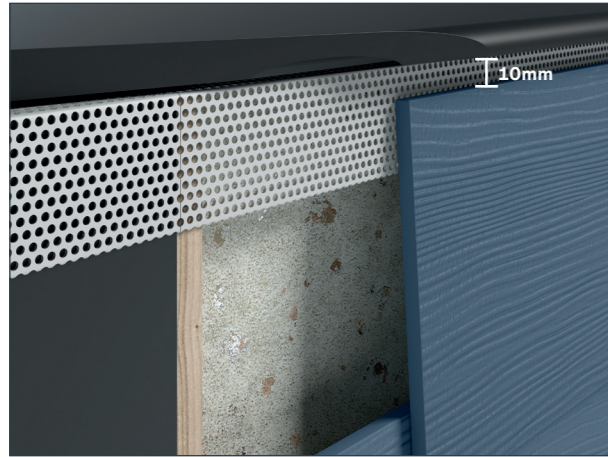


### 12. Swisspearl FC Trim Reversible

25×65/90mm Fibre cement trim. With cedar/smooth surface

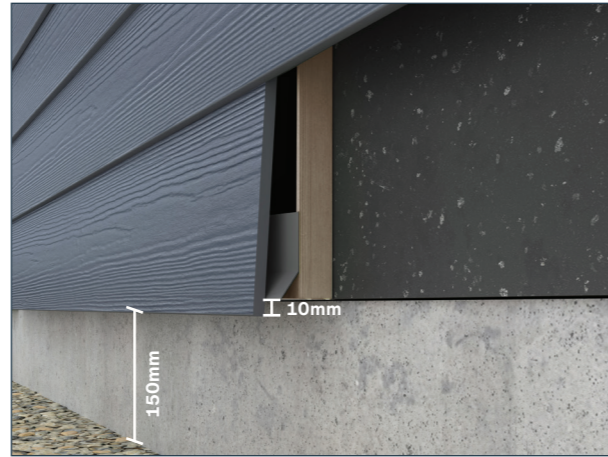
\*See next pages for technical details. Each illustration number will refer to the numbers above.

## Profile Use



### 1. Swisspearl Ventilated Profile

To keep a well-ventilated area behind Swisspearl products, use a ventilation profile for allowing air to pass from bottom to top of the cladding, whilst preventing insects, vermin and the build up of debris.



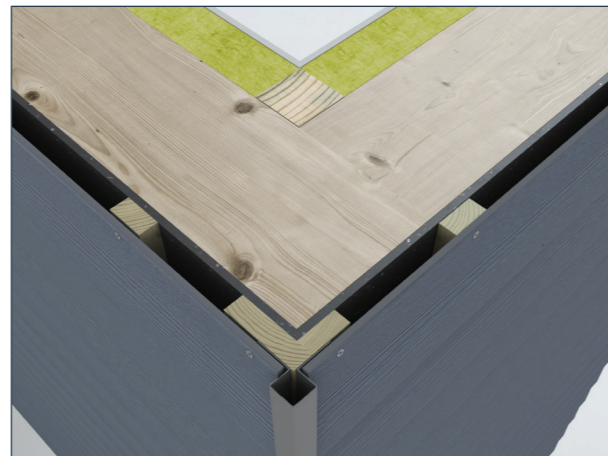
### 2. Swisspearl Start Ventilation Profile

To maintain the correct distance outwards, the first plank should be 10mm below the profile. The bottom plank is mounted a minimum of 150mm from the terrain, and 50mm from roofing, balconies and other horizontal structures. We recommend painting the rear of the bottom plank, if the distance is less than 150mm from terrain.



### 3. Swisspearl End Profile

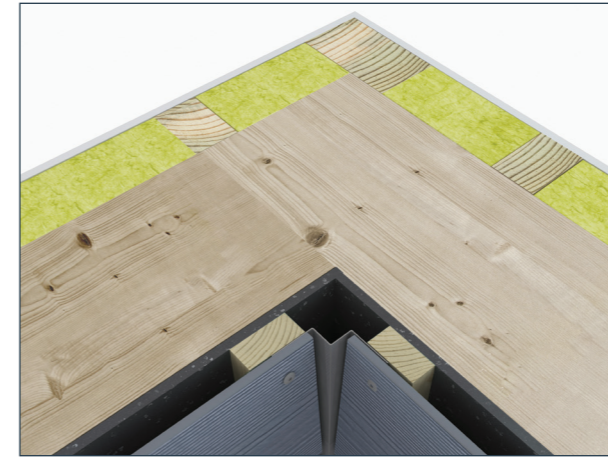
The finish is easily obtained by using a Swisspearl End Profile. There must be a minimum of 5mm clearance from the plank/panel to the profile, allowing proper water drainage.



### 4. Swisspearl External Corner Large

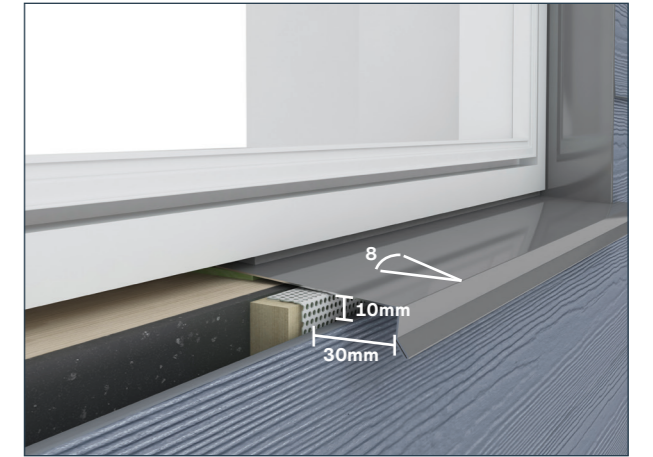
The finish is easily obtained by using a Swisspearl External Corner profile. There must be a minimum of 5mm clearance with a optional caulking line from the plank/panel to the profile, allowing proper water drainage.

## Profile Use



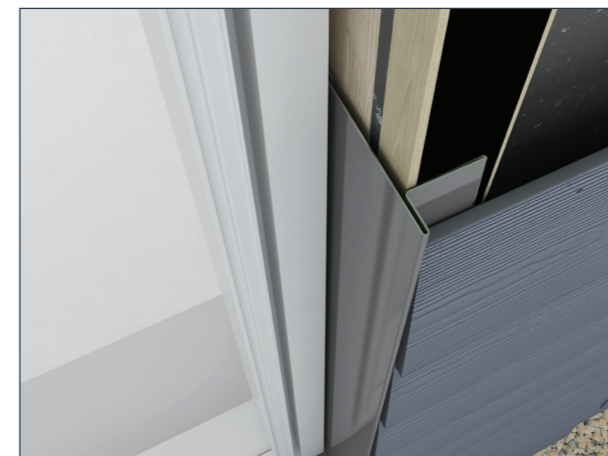
### 5. Swisspearl Internal Corner Profile

The finish is easily obtained by using a Swisspearl Internal Corner Profile. There must be a minimum of 5mm clearance with a optional caulking line from the planks/panels to the profile, allowing proper water drainage.



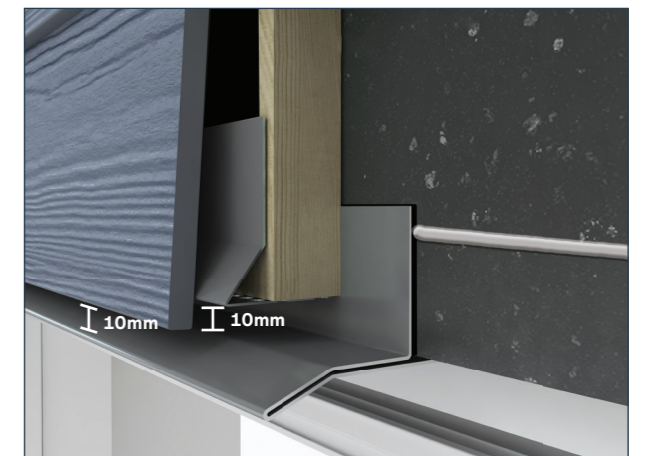
### 6. Swisspearl Window Sill Profile

Using a Swisspearl alu profile below windows is a long lasting and durable solution. Do not install Swisspearl Plank or Swisspearl Panel horizontally in areas where they will be subjected to water for longer periods. For proper ventilation, keep a minimum of 10mm distance to the plank/panel installed below. For window sills longer than 3 metres, cut a slit in the underlying profile and overlap by 25mm. If used with a Swisspearl Vertical Trim profile, cut a slit in the Swisspearl window ledge profile and bend upwards to form a 25mm overlap.



### 7. Swisspearl Vertical Trim Large

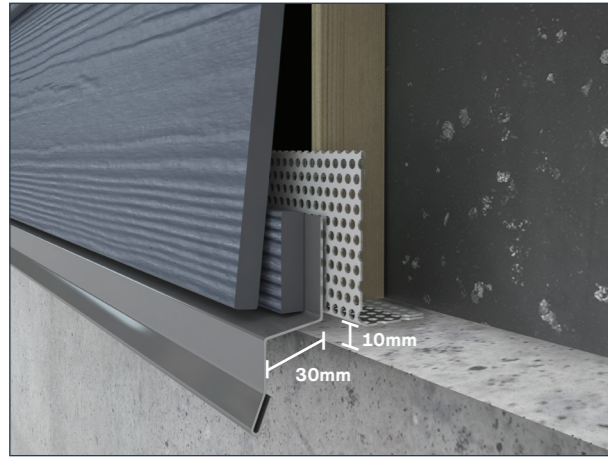
The finish around windows and doors is easily obtained by using a Swisspearl Vertical Trim profile. There must be a minimum of 5mm clearance with a optional caulking line from the plank/panel to the profile, allowing proper water drainage.



### 8. Swisspearl Horizontal Trim Large

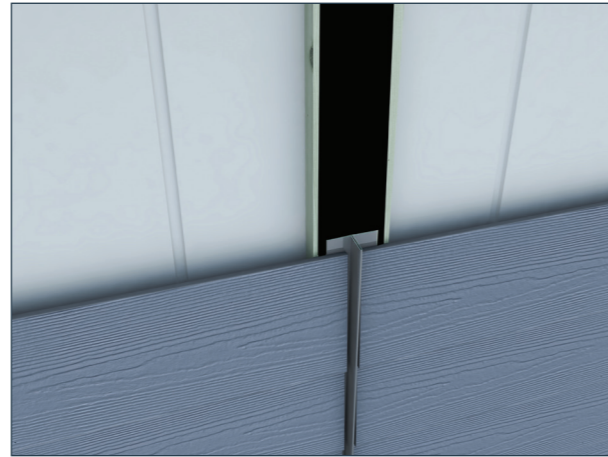
The finish above windows and doors is easily obtained by using a Swisspearl Horizontal Trim profile. There must be a minimum of 10mm clearance from the planks/panels and framing structure to horizontal profiles, allowing proper water drainage. If used with a sheathing board the joint between the trim and the sheathing board must be sealed with exterior grade sealant. We recommend using a high quality, exterior-grade caulk or sealant.

## Profile Use



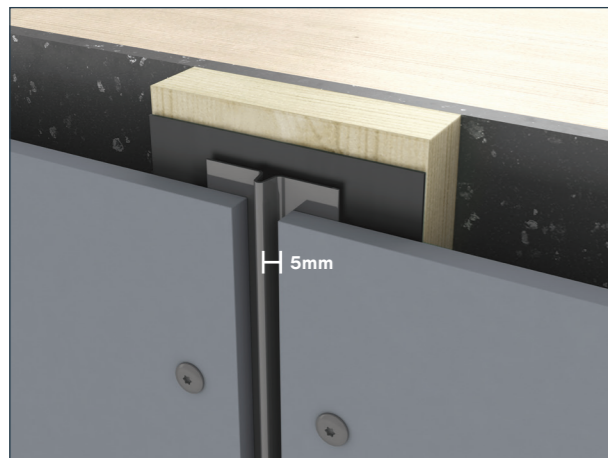
### 9. Swisspearl Drip Large

For a long lasting finish, where water should be directed away from the structure, a Swisspearl Drip cap is used. To maintain the plane of the facade, cut a 30mm fillet from a plank. For proper ventilation, leave a minimum of 10mm distance to adjacent surfaces.



### 10. Swisspearl Vertical T Profile

Good-looking vertical finish lines for butt joints can be easily obtained, by using a Swisspearl Vertical T Profile. There must be a minimum of 5mm clearance with a optional caulking line from the planks to the profile, allowing proper water drainage.



### 11. Swisspearl Caulking Profile

This profile can be used for the seamless connection of panels and can be used both vertically and horizontally. There must be a minimum of 5mm clearance with a optional caulking line from the planks to the profile, allowing proper water drainage.



### 12. Swisspearl FC Trim Reversible

As an alternative to aluminium profiles, and for easy replacement in areas with a high risk of damage, Swisspearl Fibre Cement Trim can be used on corners and to cover gaps. There must be a minimum of 5mm clearance from the plank/panel to the trim, with a optional caulking line allowing proper water drainage.

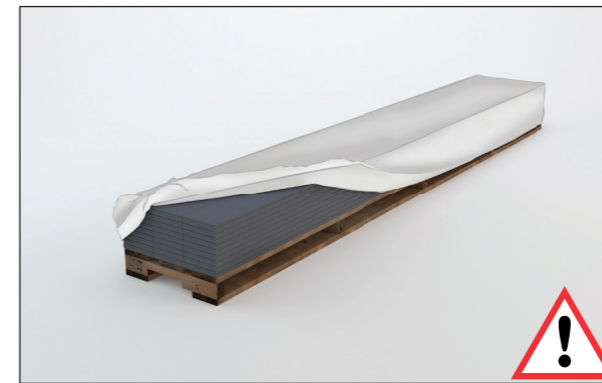
## Storing and Handling



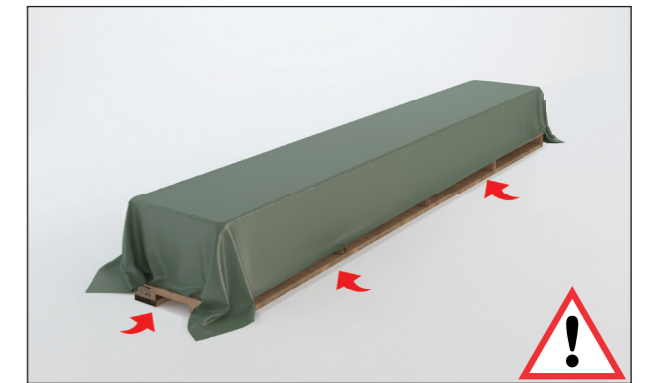
Store the pallets on a dry and level surface.



A maximum of 4 panel or 8 plank pallets can be stored on top of each other.



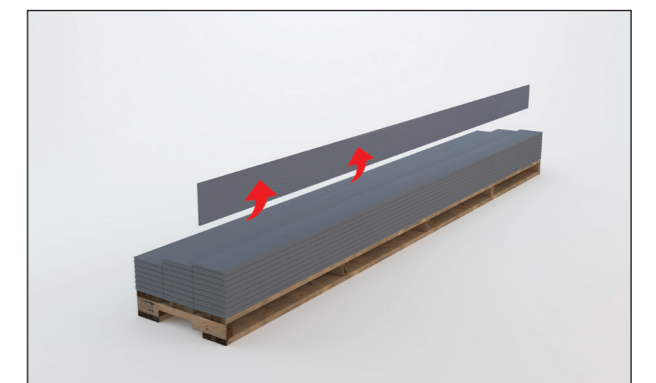
The original packaging may have sustained damage from transportation. Remove the plastic packaging immediately upon delivery at the building site, to avoid risk of efflorescence.



Important: Store materials under a dry and well-ventilated tarpaulin. If the product becomes damp, it should be placed on its vertical edge to allow rapid drying. Never install wet products.



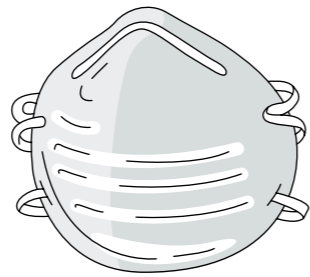
If storing on site for more than 2-3 weeks, the product should be kept under a roof. A maximum of 4 panel or 8 plank pallets can be stored on top of each other.



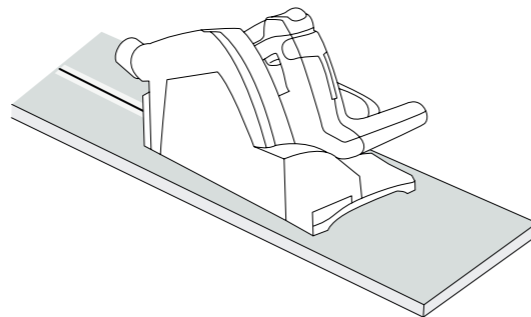
Do not drag products from the pallet, as it may leave permanent scratch marks. Lift the product by its narrow edge as it may break if handled incorrectly.

## Cutting and Sealing

When fibre cement is cut, dust is created. This dust may contain crystalline silica which can pose a health risk. To ensure adequate ventilation, always work outdoors and use cutting tools that minimise dust. Or use a HEPA filter vacuum attachment for power saws equipped with a Swisspearl Plank Circular Blade to reduce exposure to below applicable exposure limits. Never use water when cutting.



If ventilation is not adequate to limit exposure, wear a disposable respirator or air purifying cartridge respirator fitted with a Class P2 filter (European EN 143 standard). Cut the product by using a polycrystalline diamond-tipped blade. To reduce exposure to dust we recommend using Swisspearl Plank Circular Blade.



For a non-ventilated and dust free environment, we recommend using Swisspearl Mechanical Shear.

When making cut-outs use a Jigsaw with a carbide blade for fibre cement. As an alternative for small tasks, use a rough woodcutting blade.

In order to protect the edges from chipping, the direction of travel of the blade must be taken into account before deciding on whether to cut the boards on the front or reverse. Take care to remove dust from the surface after installation as leftover cement particles can leave permanent marks.

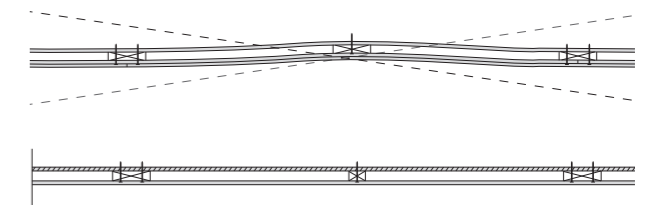


All on-site cuts (planks, panels, trim) must be resealed with 100% acrylic latex paint before installing. We recommend using Swisspearl Plank Acrylic Paint.

Be sure to apply sealant wherever the siding meets the trim and around all windows and doors. We recommend using a high quality, exterior-grade sealant.

## Framing and Clearances

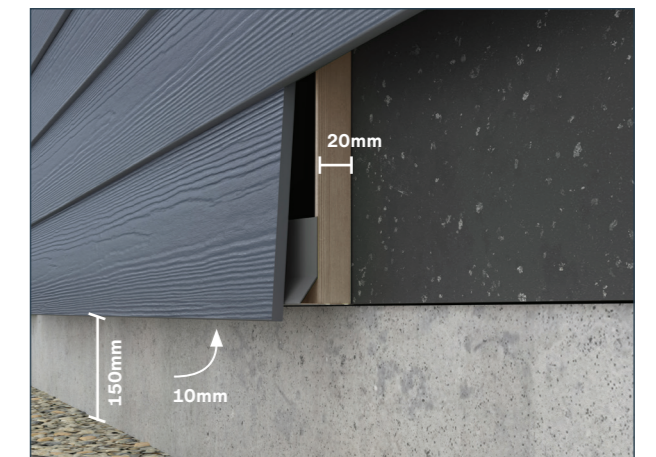
The rear of Swisspearl Plank and Swisspearl Panel should always be protected from exposure. If left exposed in a situation such as fencing etc., the rear of the product should be sealed with a suitable paint/sealer.



Swisspearl recommends installing Swisspearl Plank and Swisspearl Panel on a straight frame - any inconsistencies in the straightness will be noticeable on the finished surface.

There must be a minimum of 150mm from the terrain to the bottom of the Swisspearl Plank and/or Swisspearl Panel.

The clearance from roofing, balconies and other horizontal areas must be a minimum of 50mm from structures to the bottom of the products. Do not install product directly in contact with water or surfaces that collect water.



Swisspearl Plank and Swisspearl Panel can be installed together with a Swisspearl Windstopper. It is important to allow air to flow freely behind the facade product. Keep a minimum distance of 20mm behind the product and a minimum of 10mm gap at the top and bottom of the siding.

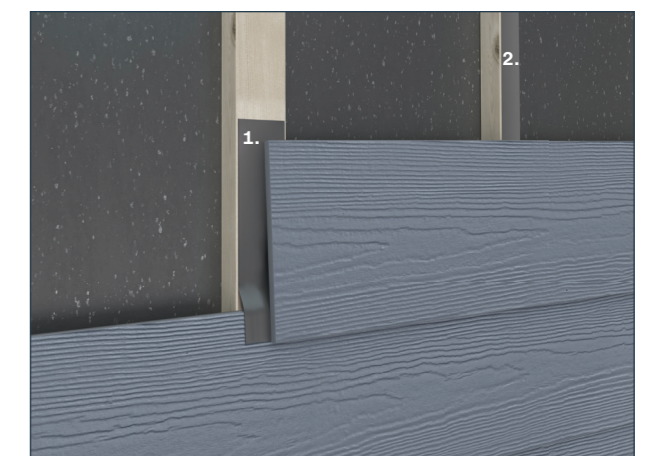


There must be a minimum of 5mm (vertical) and 10mm (horizontal) clearance around windows/doors-/framing/metal trim and other building materials to allow for structural movements and proper water drainage and ventilation.

If using untreated timber battens, we recommend using Swisspearl EPDM 45/95mm to keep water out.

### Installation options

1. Fix a ≈200mm Swisspearl EPDM 45/95mm strip on the batten centered above the butt joint, let it extend 20mm on the plank below.
2. Mount Swisspearl EPDM 45/95mm on the batten in full length. Use Swisspearl EPDM 45 for middle battens and Swisspearl EPDM 95 at butt joint battens.





# Fastening

Timber battens				Steel battens 0.56 – 2.0mm Steel    0.7 – 1.25mm Steel	
Swisspearl facade wood screw	Swisspearl 38 wood screw	Nailing by hand	Nail gun	Swisspearl facade steel screws	Swisspearl 27 steel screw
4.5 × 41mm stainless steel A2 - For visible fastening	3.9 × 38mm hardened steel ZYTEC GX - For hidden fixing	2.5 × 55mm Ring Nail galvanized steel - For hidden fixing	2.5 × 50mm Coil Nail galvanized steel - For hidden fixing	4.8 × 35mm stainless steel A2 - For visible fastening	3.9 × 27mm hardened steel ZYTEC GX - For hidden fixing

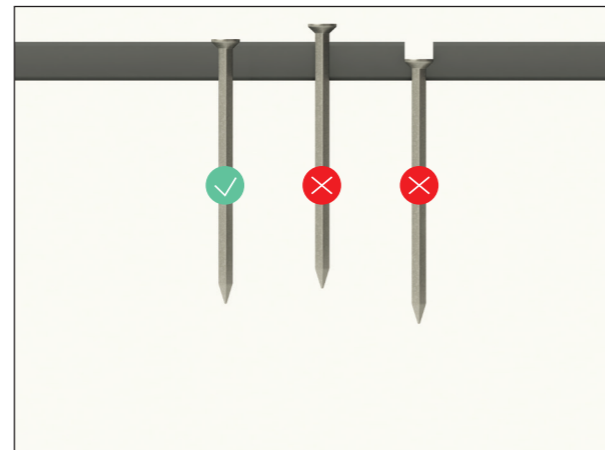
### On timber

It may be necessary to pre-drill the holes at the corners to prevent the edges from breaking. Nails must penetrate a minimum of 30mm into the structural framing.

If using screws, a minimum of 20mm must penetrate the structural framing.

If using non-Swisspearl recommended screws, please be aware whether the screws require more than 20mm penetration to resist lateral loads.

All nails or screws must be corrosion resistant stainless steel, or double dipped galvanized.



Do not countersink or angle fixings. Ensure fixings are proud of the surface of the plank.

### On steel

For hidden fixing on steel, we recommend using Swisspearl 27 Steel Screw.

When using metal battens, Swisspearl screws must penetrate into the metal framing a minimum of 7mm.

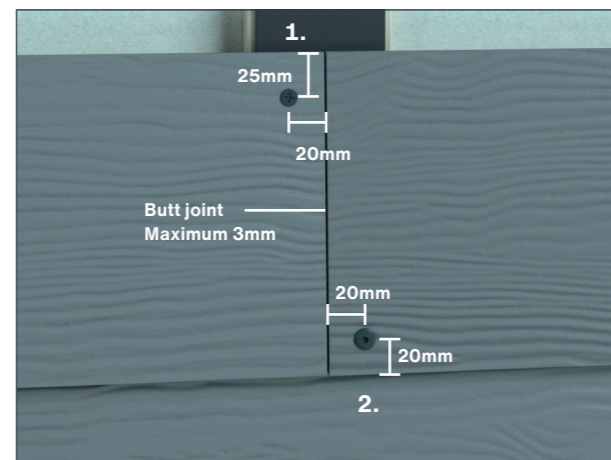
### Distances

1. For hidden fixing, all fasteners must be a minimum of 25mm from top edges.

2. For visible fixing no closer than 20mm from other edges and planks corners.

Fixings must never be closer than 16mm to timber batten edges.

**TIP!** When using visible nail fasteners on Swisspearl Planks, please refrain from using 2 nails on top of each other (inner and outer board), as the outer nail will work its way outwards over time.



When butt jointing, make sure planks are moderately butt jointed.

# Installation Methods

### Swisspearl Plank horizontal

#### Swisspearl Plank installation on wood or steel

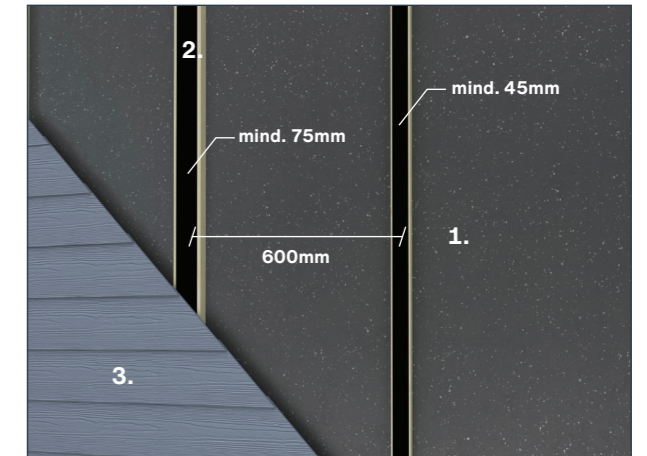
1. Swisspearl Windstopper or similar
2. Wood or Swisspearl Ventilated Wall Profile 70/100
3. Swisspearl Plank

Batten thickness: A minimum distance of 20mm is needed for ventilation.

Minimum width: For middle battens 45mm

Minimum width: For butt joint battens 75mm

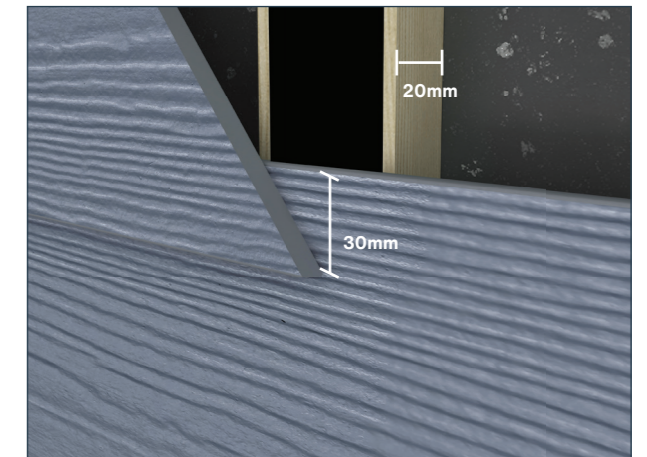
Maximum distance between battens fixing centres 600mm



Always install Swisspearl Plank from the bottom of the wall. Starting 1cm below Swisspearl Plank/Start Ventilation Profile.

Use 30mm overlapping of each 180mm plank, by setting a mark for every 150mm upwards.

When butt jointing, make sure planks are moderately butt jointed and always over a batten to avoid warping.



For fast, easy and accurate installation, we recommend using a Swisspearl Gecko Gauge. The Geckos assist in creating the correct overlap and ensure the proper location of the screw or nail. Using a Gecko Gauge set clamped to either end of the Planks, makes it possible for one man to install Swisspearl Planks.

**NB!** The Geckos do not scratch or leave marks on the painted planks.



# Installation Methods

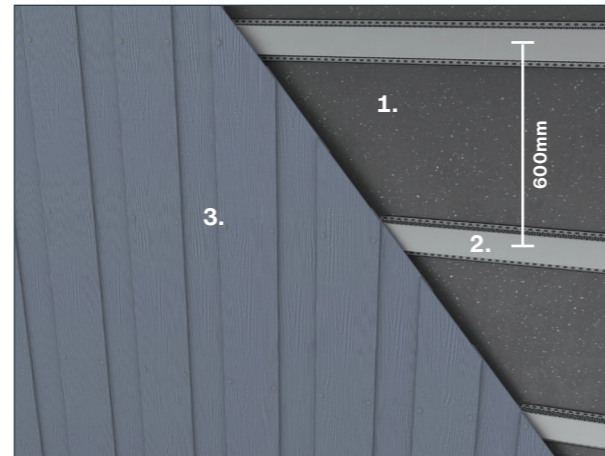
## Swisspearl Plank vertical

### Swisspearl Plank on ventilated steel framing

1. Swisspearl Windstopper or similar
2. Horizontal Swisspearl Ventilated Wall Profile 70/100
3. Swisspearl Plank

Maximum distance between battens fixing centres 600mm.

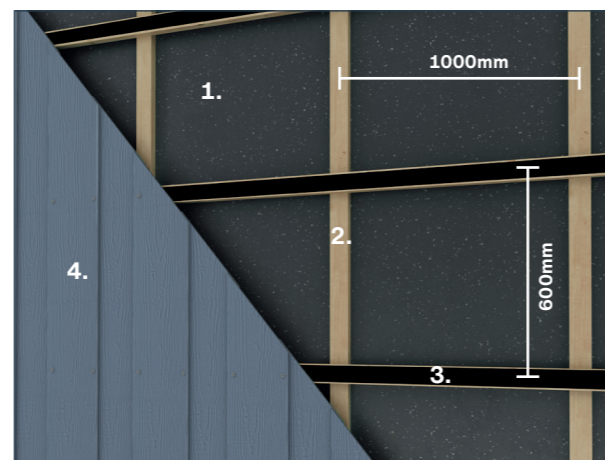
At the bottom of the wall install a Swisspearl Ventilated Wall Profile 40. Besides functioning as a fastening point, the Swisspearl Ventilated Wall Profile 40 also offers ventilation to the construction. This profile can also be used around windows and doors.



### Swisspearl Plank on ventilated wood framing

1. Swisspearl Windstopper or similar
2. Vertical batten min 20mm thickness, max o.c 1000mm.
3. Horizontal batten 38x56mm.
4. Swisspearl Plank

Maximum distance between horizontal battens o.c 600mm.



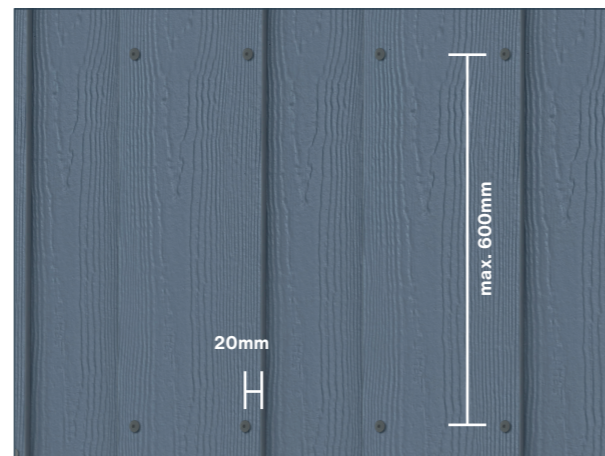
### Fixing for visible fastening on steel or wood frame

The Upper plank overlaps the edge of the plank by at least 30mm on each edge. The underlying plank is fastened with nails or screws and the top plank with Swisspearl Facade Wood Screws 4.5x41mm on wood battens and Swisspearl Facade Steel Screws 4.8x35mm on steel profiles. The fastener is placed a minimum of 20mm from the edge and 20mm from the top and bottom corner.

### Distance for the planks

Inner plank o.c 300mm distance  
Outer plank o.c 300mm distance

Due to the possible ingress of a slight amount of water during high wind driven rain conditions, it is recommended that the rear of the plank is painted at least 50mm in from the edges of the over-lapping plank to prevent efflorescence.



For visible fastening on timber battens, we recommend using Swisspearl Facade Screw.

# Installation Methods

## Swisspearl Panel

### Swisspearl Panel on steel or timber battens.

1. Swisspearl Windstopper or similar
2. Swisspearl Ventilated Wall Profile 70/100 or timber batten
3. Swisspearl Panel

Batten thickness: A minimum distance of 20mm is needed for ventilation.

Minimum width: For middle battens 45mm

Minimum width: For butt joints battens 75mm

Maximum distance between battens fixing centres 600mm

### Fastening Distance

No closer than 20mm from edges and 50mm bottom and top corners.

If using Swisspearl Facade Screw as fasteners for panels, pattern distance is 400mm around perimeter and in the field.

If using nails as fasteners for panels, pattern distance is a maximum of 150mm around the perimeter and 300mm in the field.

For fastening patterns in high wind load zones, please go to our website [www.swisspearl.com](http://www.swisspearl.com)

Swisspearl Panel can be fitted butt jointed or with a maximum 3mm expansion joint. This joint should always be centred on a batten. For runs in excess of 15 meters an expansion joint of 5mm is required. For easy installation of large areas, we recommend using Swisspearl Caulking Profile.

### Swisspearl Panel installation as ceiling or similar

Minimum width: For middle battens 45mm

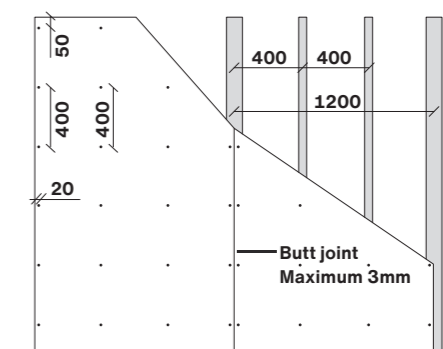
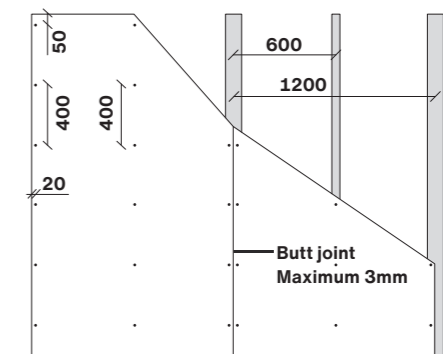
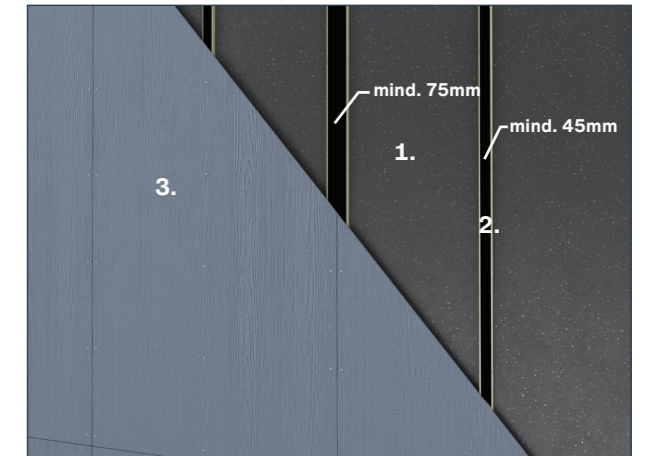
Minimum width: For butt joints battens 75mm

Maximum distance between battens fixing centres 400mm

### Fastening Distance

No closer than 20mm from edges and 50mm bottom and top corners.

If using Swisspearl Facade Screw, the distance is 400mm around perimeter and in the field.

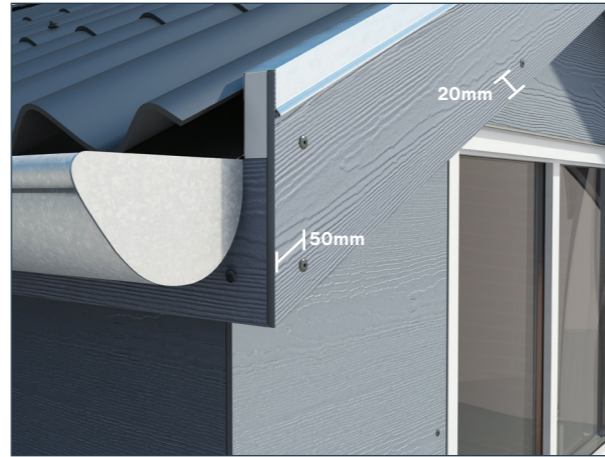


## Installation Methods

### Swisspearl Panel used as bargeboards and fascia

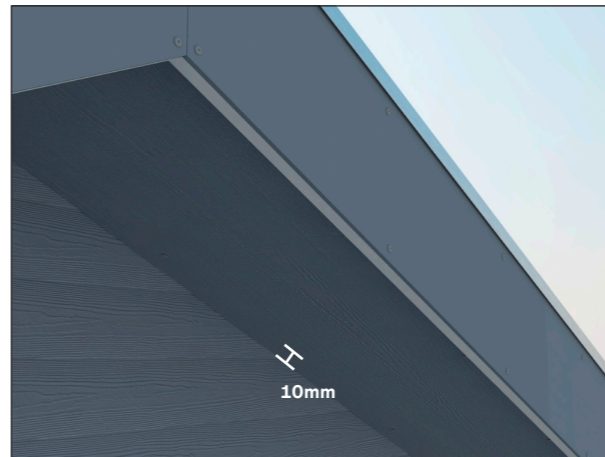
Fascia & bargeboards higher than 180mm can be installed using Swisspearl Panel fastened with Swisspearl Facade Screw.  
The fascia board should be installed on 19mm waterproof plywood, to keep its straightness.  
Bargeboards can be mounted directly onto rafters.

Maximum width of Swisspearl Plank and Swisspearl Panel without ventilation is 400mm, making sure that there is no possibility of water ingress.



### Swisspearl Panel used as soffit

Swisspearl Panel can also be used as soffit when cut to the correct size. Care must be taken to ensure that the correct ventilation gap of 10mm is present.  
Maximum distance between battens fixing centres 400mm



### Swisspearl Panel used on dormer

Swisspearl Panel may also be applied on dormer and other large surfaces where the use of Swisspearl Plank can be difficult. Swisspearl Panel can be installed either in large format or cut in to size.

**NB!** For more information about the fastening and sub constructions, see page 14.

If applying the Swisspearl Plank and Swisspearl Panel on soffits or dormers, remember to leave a gap of min 10mm along the edge for a well-ventilated construction.

All on-site cuts must be resealed with 100% acrylic latex paint before installing.



## Installation Methods

### Swisspearl Trim

#### Swisspearl FC Trim Reversible

1. Swisspearl FC Trim Reversible 25x65/90mm  
Vertical fastening distance 400mm  
Horizontal fastening distance 300mm
2. Swisspearl Plank or Swisspearl Panel  
If you install Swisspearl FC Trim Reversible on overlapping planks, be sure to nail on the overlapping points and into the framing.

Use 2.5x60mm HDG nails for fibre cement trim.  
Always nail from one end to the other. Never nail from both ends to the middle as it will stress the trim board.  
Drive the fastener flush with the trim. Do not overdrive the fasteners. If a fastener is driven below the surface of the trim, its holding power is reduced, and it creates an entryway for moisture.

When making 90° corners, it may be necessary to predrill 12mm from the edge to help prevent the edges from breaking.

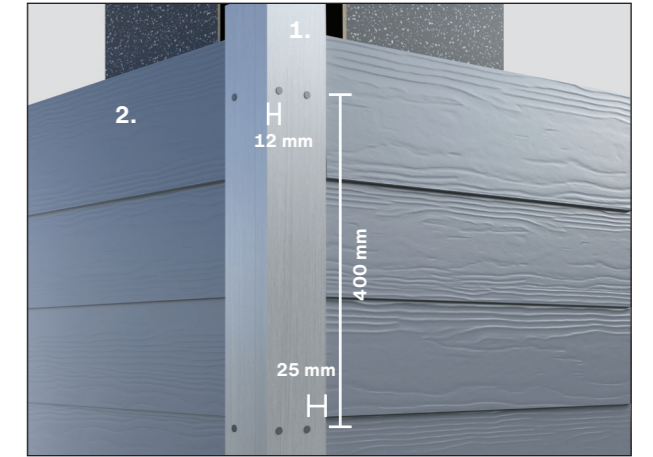
Position fasteners no closer than 25mm from the side edges of the trim and no closer than 50mm from the top and bottom.

If using trim only on one side, fasten 25mm from edges on both sides of the trim.

If using trim in e.g. window- or doorsills, mitre-cut the corners for best finish.

#### Swisspearl Alu Profiles

Profile fastening distance is 600mm with a minimum of 2.5 x 25mm roofing nail, in Ø4mm pre-drilled holes.  
If it is necessary to install more than one Swisspearl alu trim after another, make sure to leave a 1mm gap between the two trim profiles to allow for joint movement.



**NOTE!** If using unpainted aluminium in connection with fibre cement products, be aware of surface oxidation.

## Care & Maintenance

### Annual Inspection

Normally Swisspearl facade products do not require any maintenance to keep up its strength, properties and function. Weathering impacts may however influence the visual appearance of the facade. Therefore, an annual inspection of the ventilation gaps, joints and fixings is a good idea. Detection and repair of possible damage secures a prolonged lifetime for the facade.

### Cleaning

Swisspearl facade can be cleaned with cold or lukewarm water if necessary with the addition of a mild household cleaning agent not containing solvents. Always start from below with well-defined areas. Rinse with plenty of clean water until the facade is perfectly clean.

Before cleaning full scale, it is recommended to test the chosen cleaning method on a smaller area to make sure it answers its purpose.

### High Pressure Cleaning

Warning! High Pressure Cleaning is a severe treatment for fibre cement cladding. Exaggerated or wrong use of a high pressure cleaner may damage the surface. Therefore, High Pressure Cleaning is not recommended.

### Moss & algae

Moss and algae growth can be removed with common agents available on the market. Care should be taken to ensure that the cleaning agent does not cause damage to the surface of the plank or panel. Confirm the compatibility of your cleaning agent for use with 100% acrylic latex paint with your cleaning agent supplier and ensure it is applied according to the supplier's instructions. It is advised that before conducting a large scale application a test is carried out on a small, inconspicuous area to ensure that the cleaning agent has no effect on the colour of the plank or panel.

### Efflorescence

Efflorescence is a naturally occurring, white, powdery deposit that can appear on cement-based building materials (including bricks, cement walls, grout, and fibre cement). It is the result of a process in which moisture draws salt crystals to the surface, evaporates, and leaves a chalky substance behind. Efflorescence occurs when all three of the following conditions exist:

1. Water-soluble salts are present in the building material.
2. There is enough moisture in the wall to turn the salts into a soluble solution.
3. There is a path for the soluble salts to get to the surface.

Efflorescence may also be a sign of water intrusion behind the siding. Make certain that all openings are properly covered and there is no water intrusion due to over-driven nails.

While some efflorescence may weather away naturally on its own, it is best to take steps to treat it. Efflorescence can be removed with household white vinegar and water. For most cases of efflorescence, Step 1 - 3 works well. But for substantial deposits of efflorescence go to Step 4.

For best results, follow these cleaning instructions:

1. Protect areas that are not to be cleaned. Rinse all plants and vegetation around the facade with water before and after application of the vinegar.
2. Generously coat the entire surface area with vinegar. Allow the solution to sit on the surface for 10 minutes.
3. Rinse the treated area thoroughly with water from the top down and allow the area to air dry.
4. For extra tough efflorescence: Use a 10% acetic acid solution (E.g. 1 part Vinegar Acid 32% and 2 parts Water) and apply to affected area with a cotton cloth. A light scrubbing with the cotton cloth may be required. After about 20 seconds rinse with water.

## Painting

All Swisspearl Planks, Panels & Trim are factory sealed. Reseal cut edges with a high-quality 100% acrylic latex paint before installation. Use only top quality, exterior type, acrylic latex paints. Confirm the compatibility of your paint to fibre cement with your paint supplier. Swisspearl recommends a 100% acrylic latex paint using only the highest-grade paints.

The product must be allowed to breathe. Do not prime, paint, or stain on the reverse side. Swisspearl Plank CP 999 is factory primed, a finish coat should be applied within 6 months of installation. Use a high-quality 100% acrylic latex paint. Before applying the finish coat, always follow the paint manufacturer's recommendation for surface preparation and paint application.

**NOTE:** Never apply oil-based paints to Swisspearl Planks, Panels or Trim. Always paint out of direct sunlight and with a 100% clean and dry surface, above 10° Celsius. Take care to paint entire planks before stopping, as drying lines will show.

**Swisspearl is not responsible for surface paints and workmanship.**

## Health and Safety

### Avoid breathing silica dust

As with all other building materials, adherence to local building rules and regulations when working with Swisspearl products is required. Working with crystalline silica containing products should be conducted in well-ventilated conditions by use of simple and effective precautions.

When cutting, grinding or drilling, respirable crystalline silica is released. Breathing large amounts of dust may cause irritation to respiratory functions, eyes and/or skin.

Therefore wear personal protection equipment (Safety goggles, safety suit and a respiratory mask - P2 marked) See safety data sheet for full information.

Ensure adequate ventilation at workstation. For best practice use Swisspearl Mechanical Shear.

Remove dust after installation with water to suppress airborne dust particles.





**Swisspearl Ireland Ltd.**

Unit 6 Northwest Business Park  
Ballycoolin, Dublin 15  
Ireland  
+353 1 9058 300  
info@ie.swisspearl.com

**swisspearl.com**