

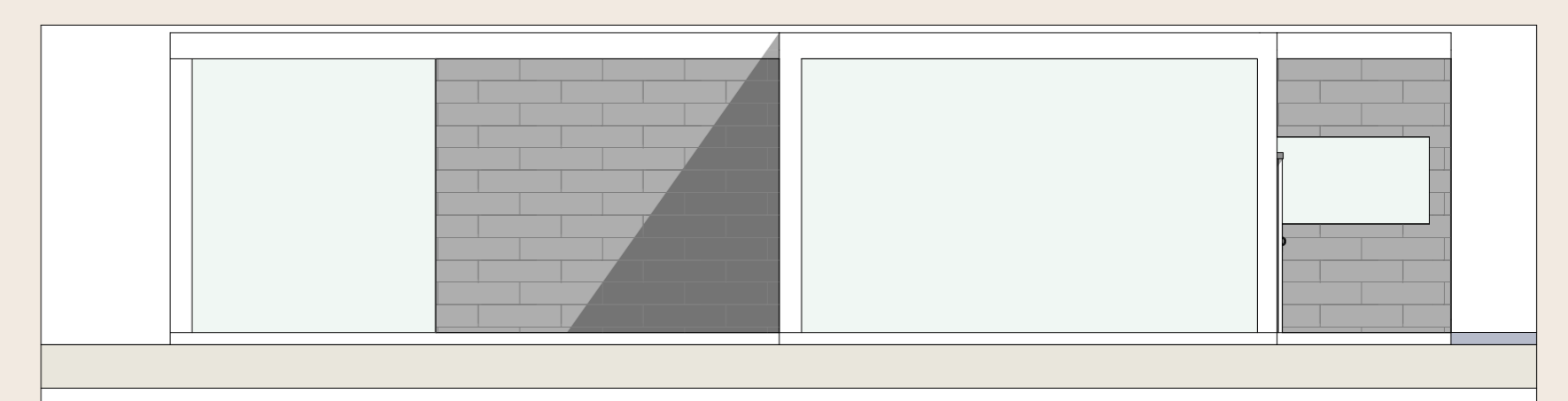
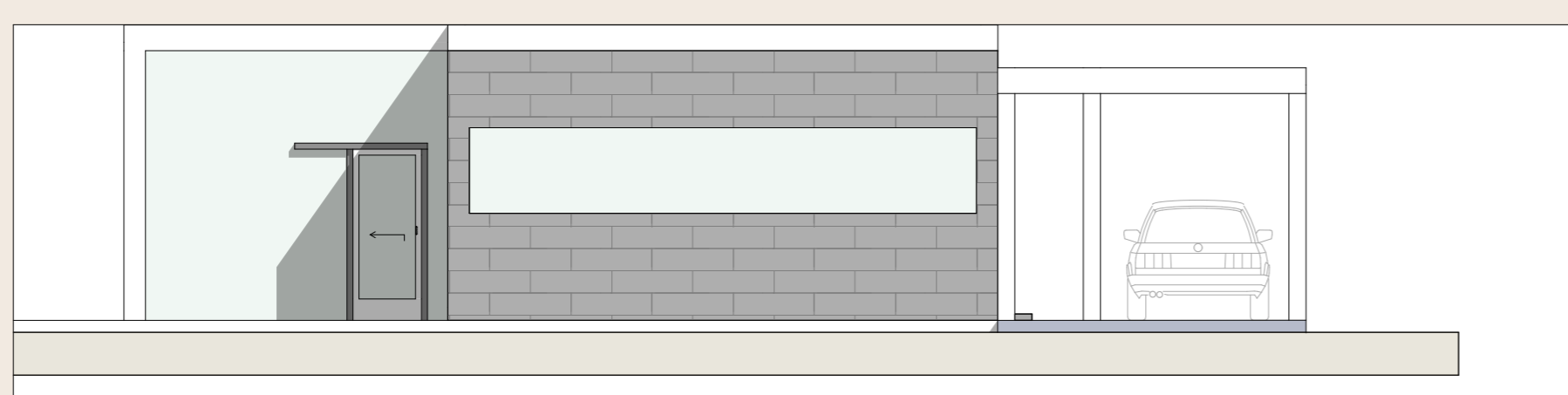
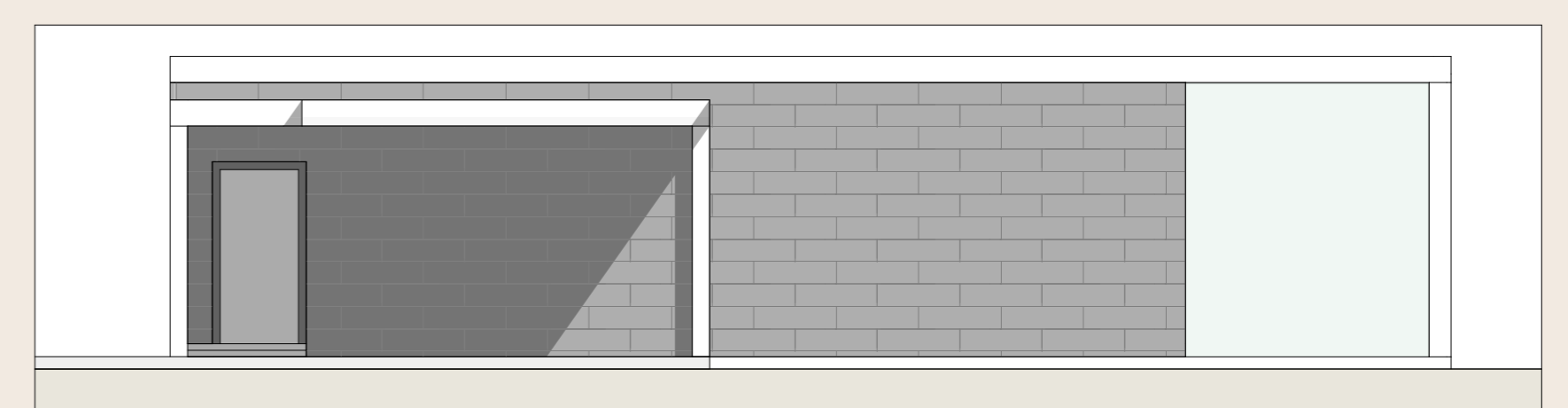
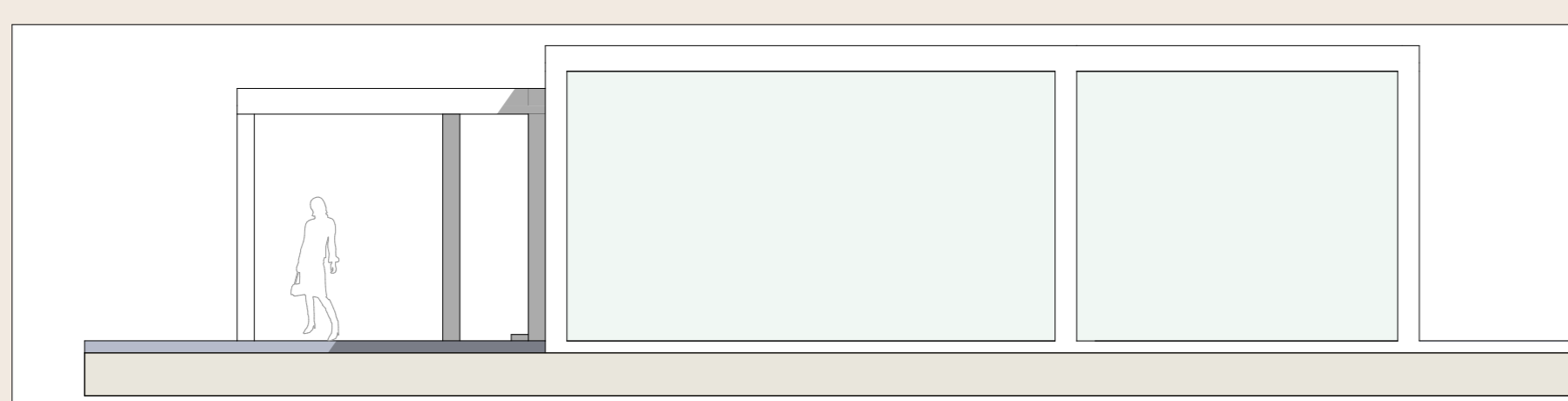
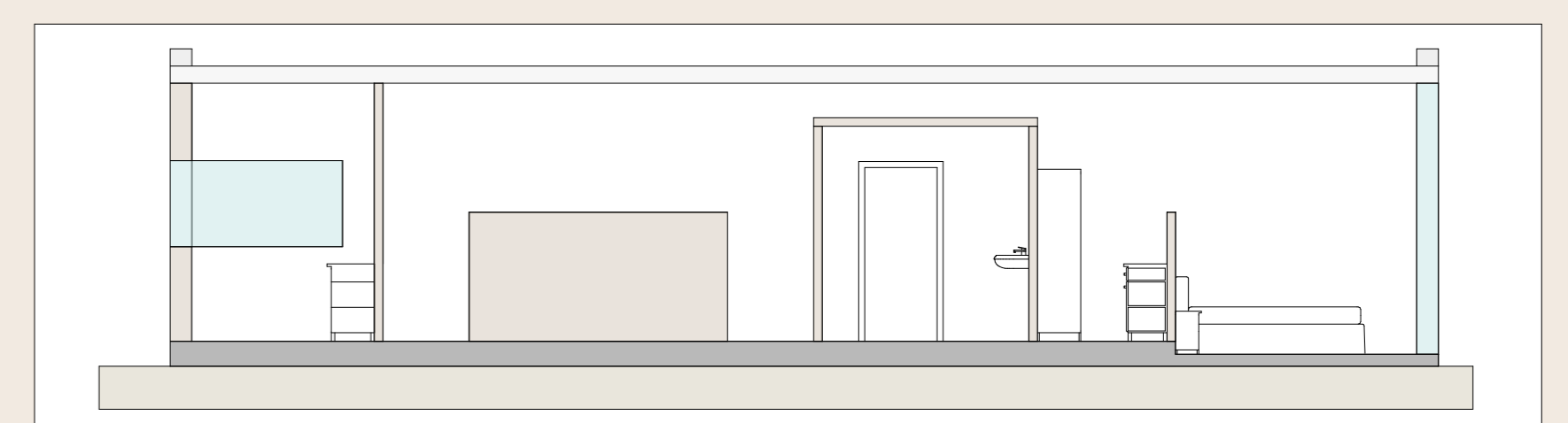
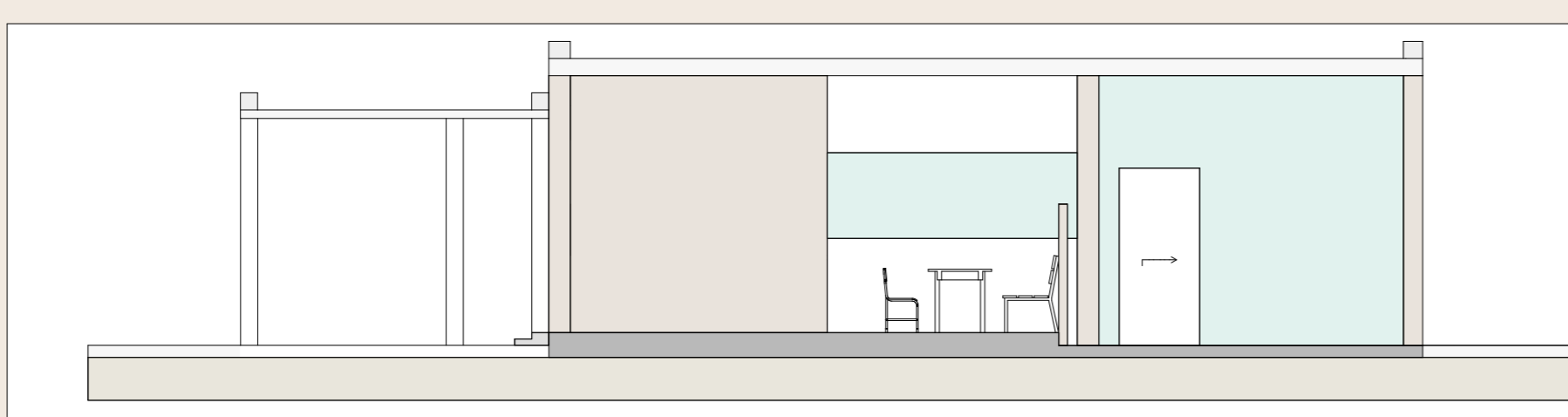
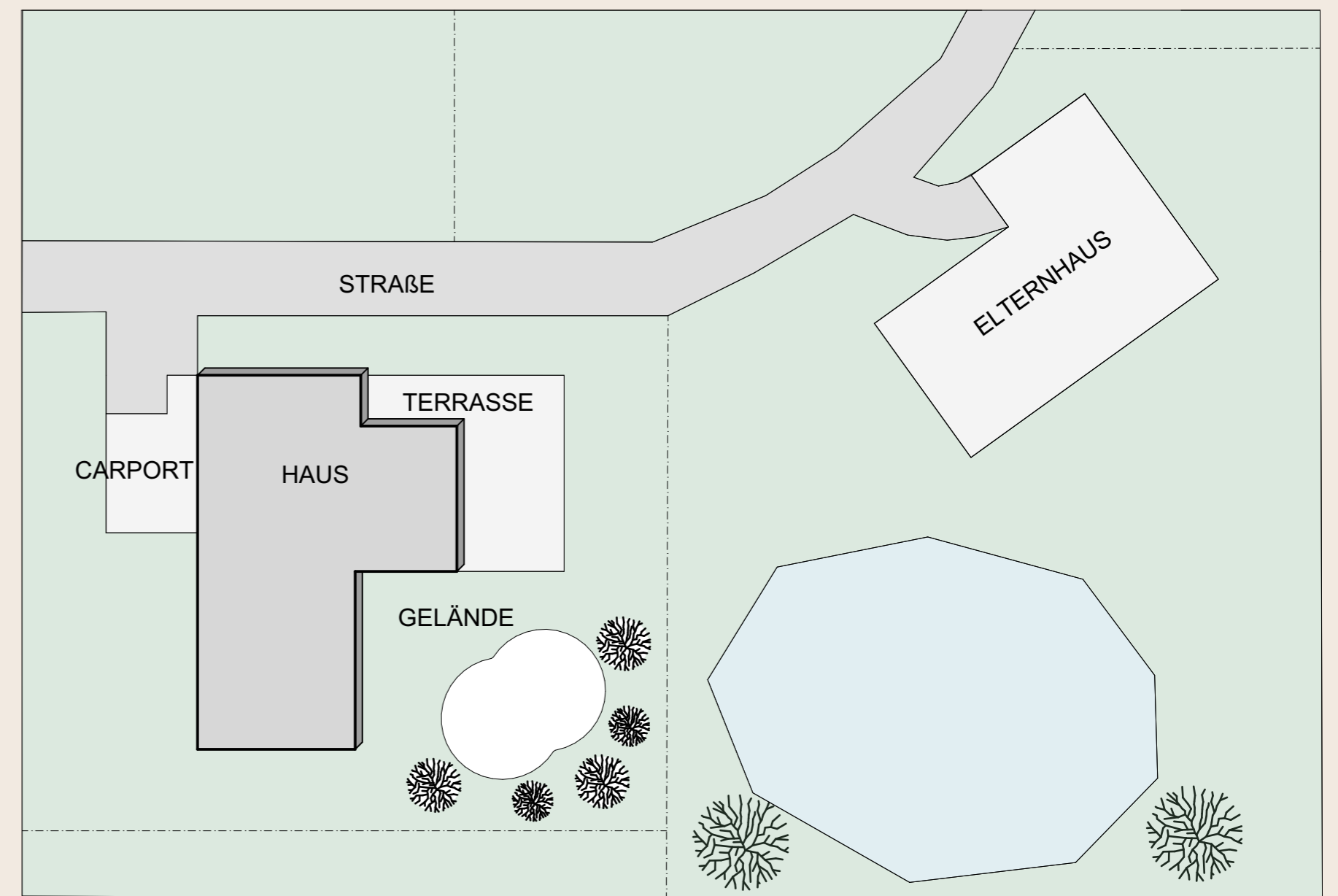
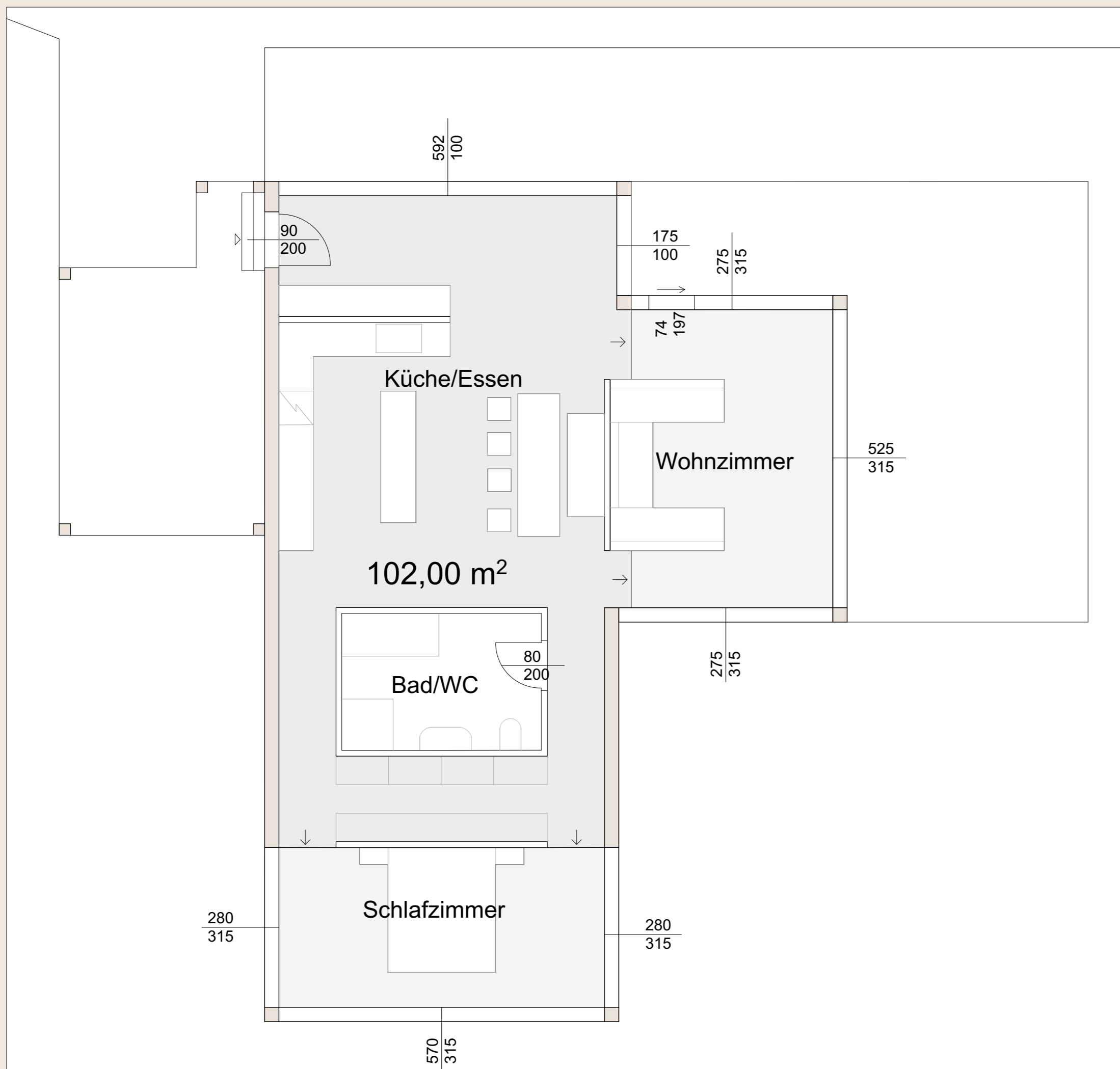
32. Swisspearl HTL-Trophy

Architektur Schülerwettbewerb



ARCHICAD BILDUNGSVERSION

SWISSPEARL



Projektverfasser:
Angela Eckhart

Projektbetreuer:
Herr Arch. DI Vinzenz Zeilinger
Herr Arch. DI Roland Lienbacher

Projektinformationen:
Die Fassaden sind mit Eternit Carat Fassadenplatten in der Farbe Anthracite 7021 verkleidet.