

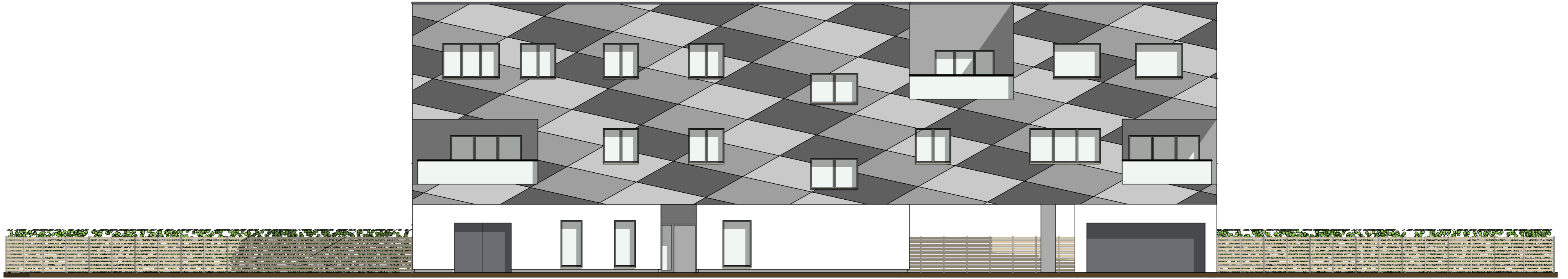


# HTL MÖDLING BAUTECHNIK HOCHBAU Swisspearl HTL - Trophy 2024

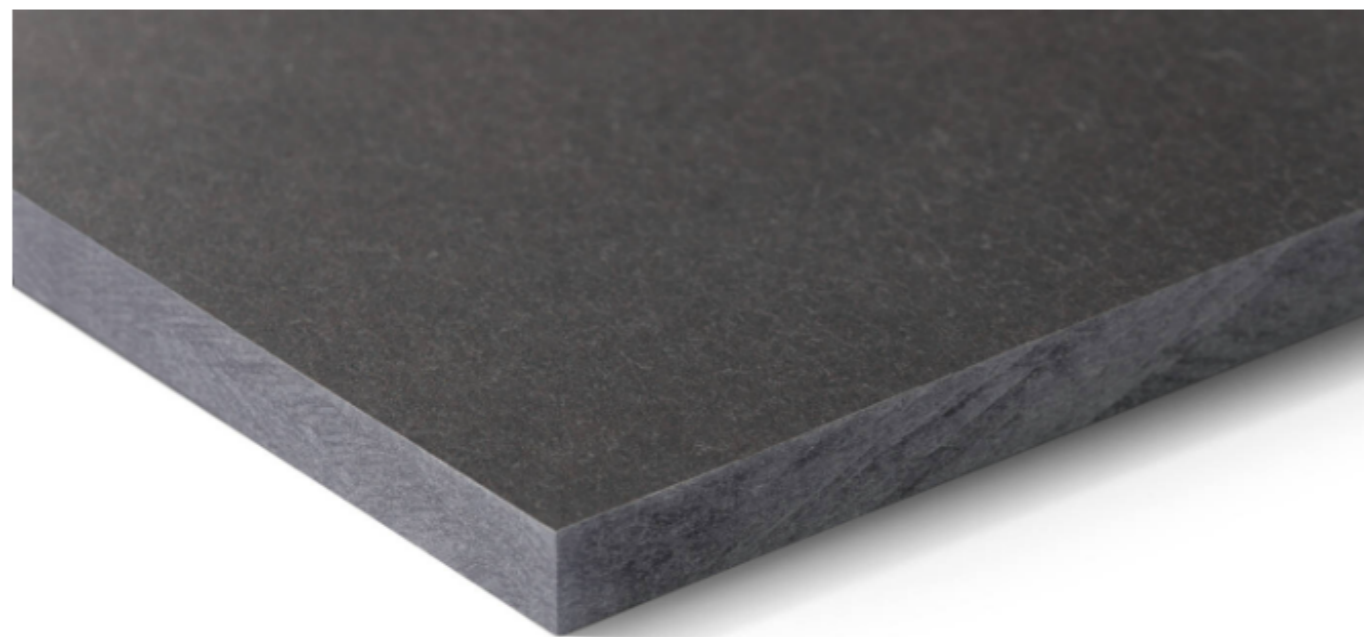


PROJEKTEAM, KLASSE  
Phillip Csernicsek, 5BHBTH  
Ibrahim Ucar, 5BHBTH  
Filip Cozachevici, 5AHBTT

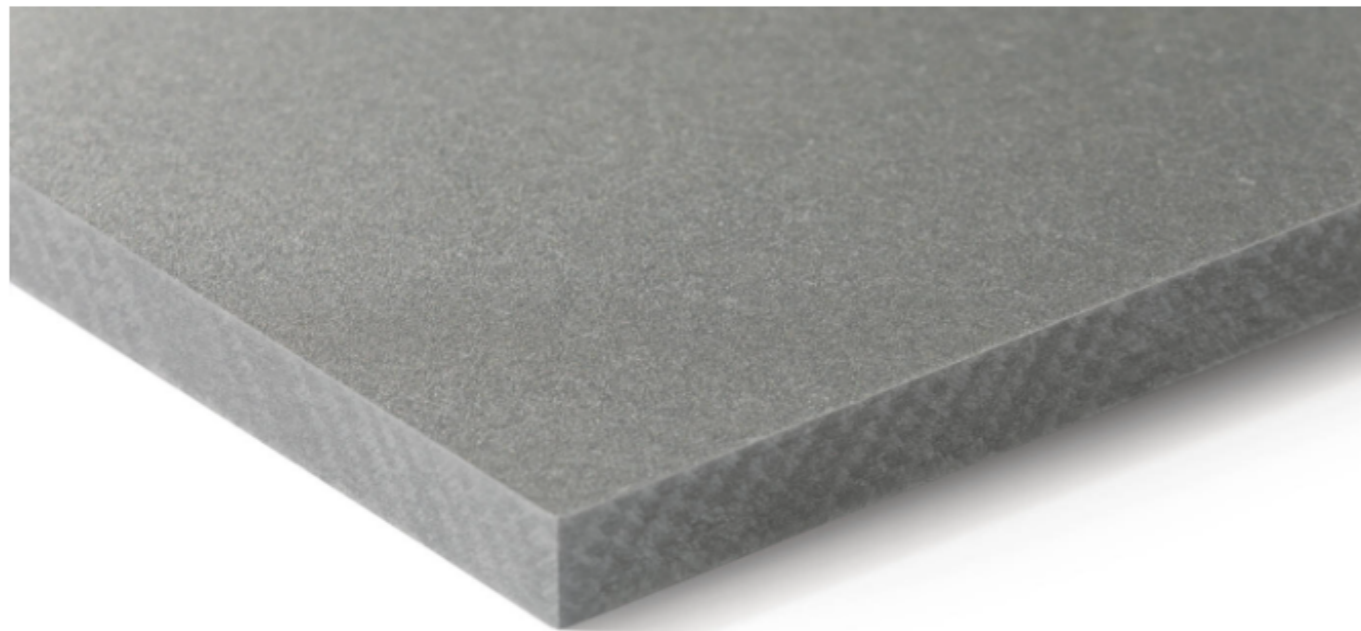
## Nachhaltige Wohnhausanlage in Mödling Keller Massivbauweise, EG, 1.OG und 2.OG Holzbauweise



WEST ANSICHT



Largo Swisspearl Carat Anthracite 7020



Largo Swisspearl Carat Granit 7060



Largo Swisspearl Carat Ivory 7091



2. OBERGESCHOSS

