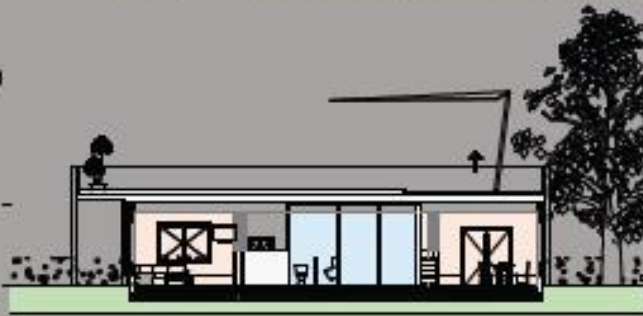




Schnitt 01

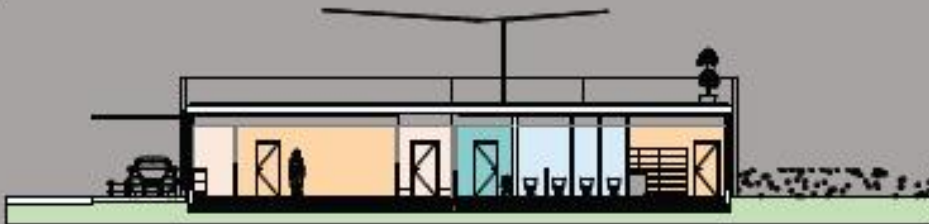


Swisspearl Avora

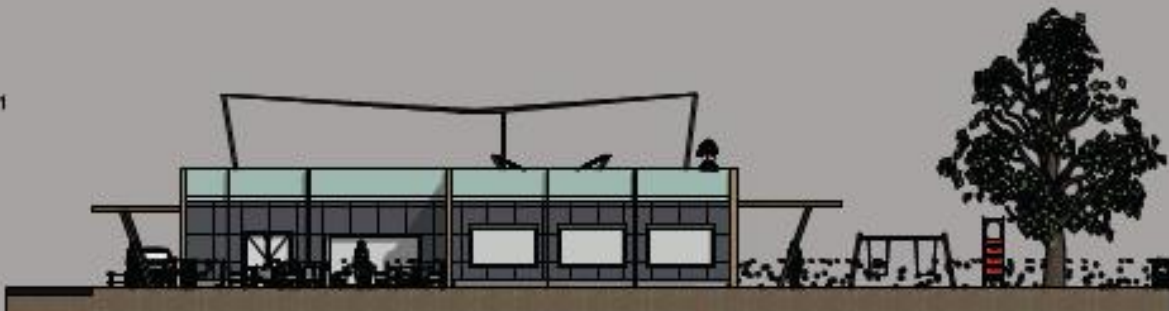


Fassa denplatten

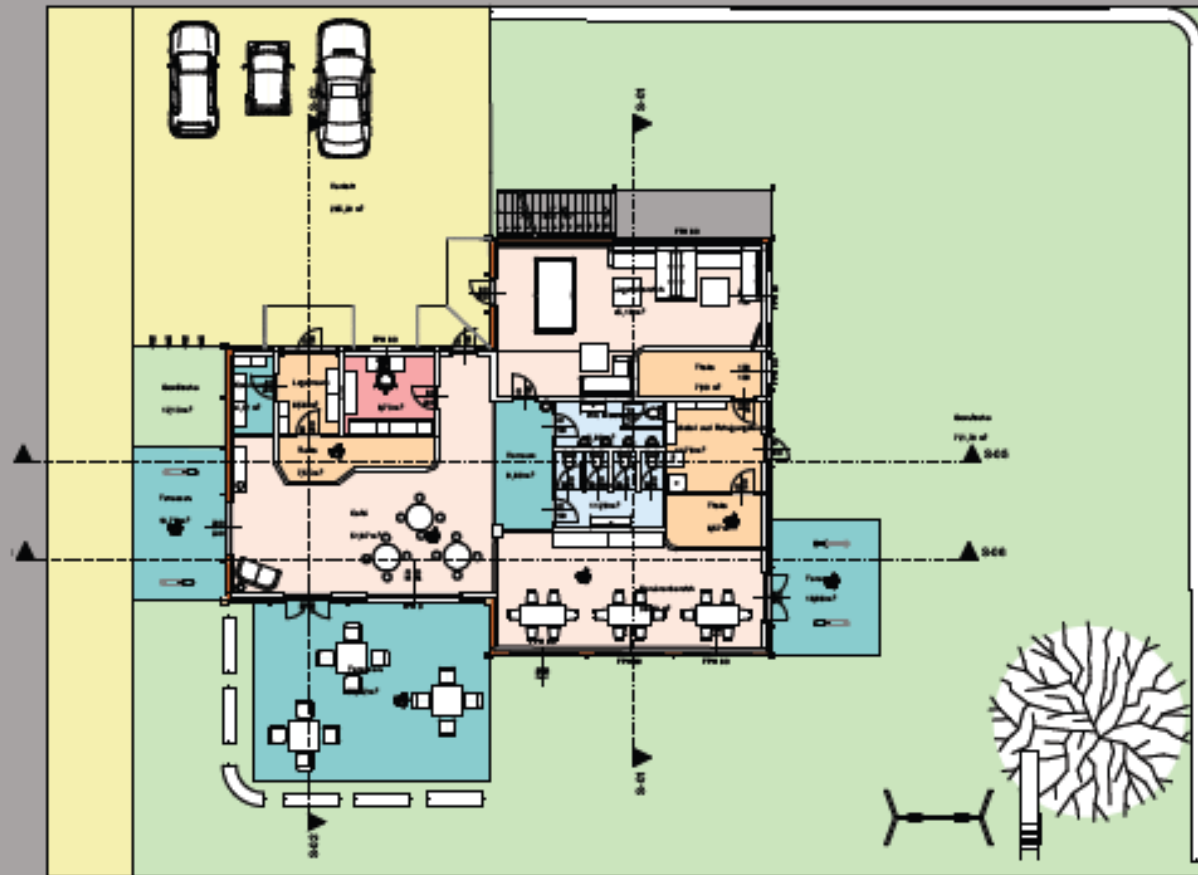
Schnitt 05



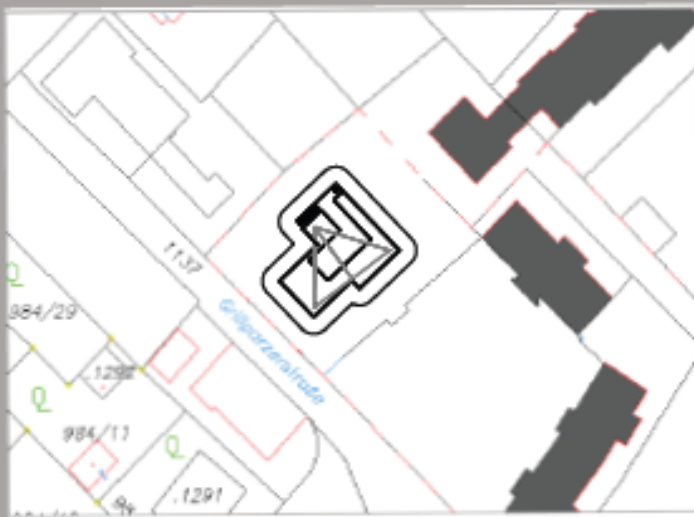
Ansicht 01



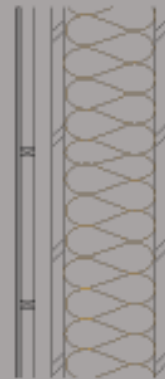
Grundriss



Lageplan



Wanddetail Holz-Riegelwand



- Eternit-Fassadenplatte 0,8 cm
- Lattung vertikal 4/4
- Hinterlüftung 4 cm
- Winddichtung 0,1 cm
- Rauschalung 3,5 cm
- Holz-Riegel mit Zellulosedämmung 25 cm
- Gipskartonplatte 3 cm
- Innerputz 1,5 cm

Ansicht 03

