

SWISSPEARL

Roofs





Index

About Swisspearl

Material & Sustainability	13-14
Tradition & Strong Values	15-16

Product Ranges

Slates

Jutland Slates	21-22
Moorland Slates	23-24
Westerland Slates	25-26

Corrugated Sheets

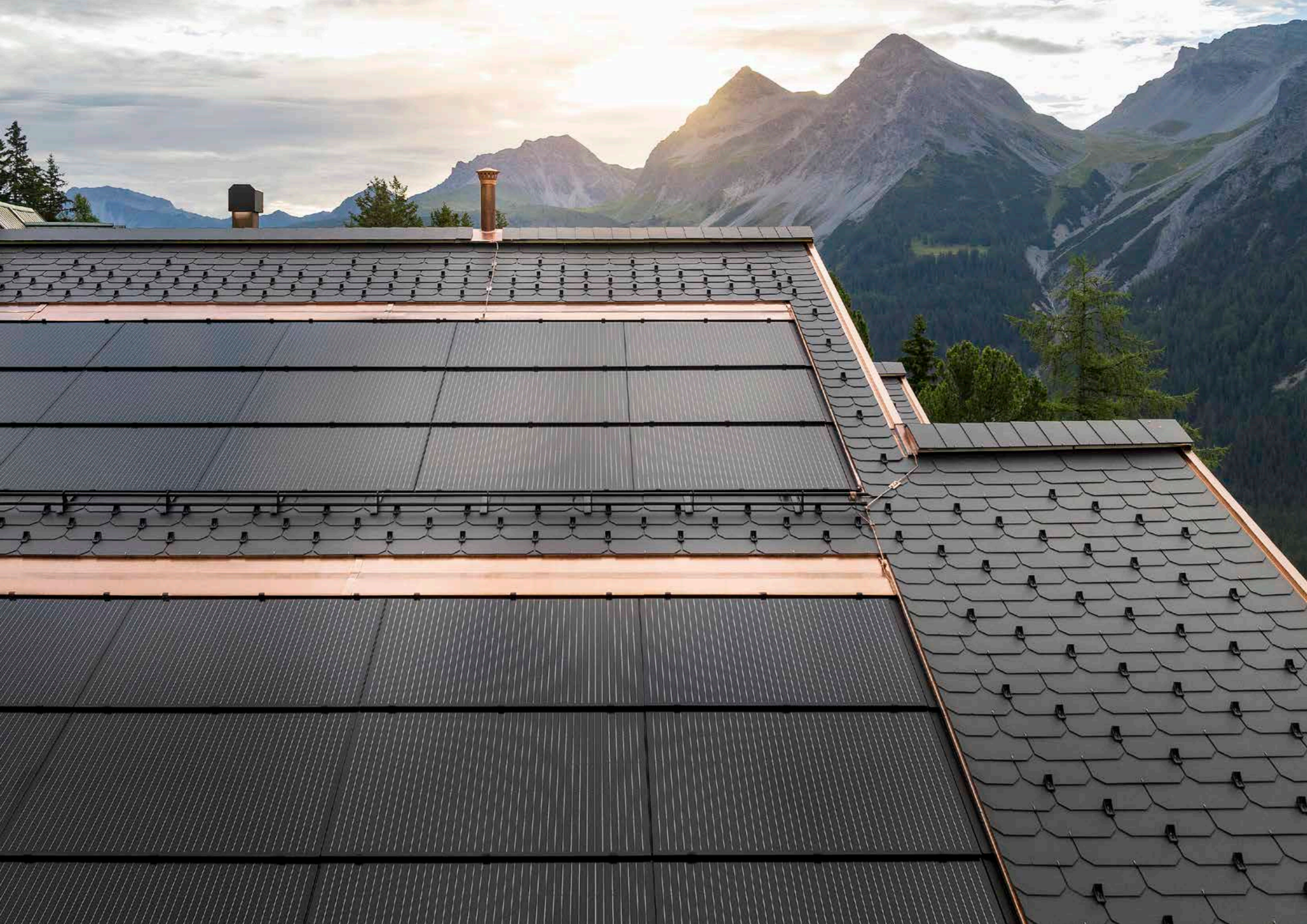
B5	29-30
Cemsix	31-32
B7	33-34

Solar

Sunskin Roof Lap	35-38
------------------	-------

Service

Warranty & Material properties	39
Advice	40











Respect for People and the Environment



Fascination with fibre cement – a highly resistant and durable building material

Fibre cement has long been an excellent material for design and construction due to its wet formability and exceptional strength when dry. Its durability and reliability are achieved through a precise material composition that is subject to constant research and further development. The production process is a combination of many years of experience in traditional manufacturing and innovative further developments based on the latest findings.



Our fibre cement consists of cement, pulp, water, plastic fibres and air. The combination of these ingredients results in a durable building material that is also lightweight compared to other cement materials. Holding the material reveals its homogeneous nature and surface quality. Its appearance highlights the unique character and natural texture.



Fibre cement is an extremely versatile material that can be used in a variety of ways. Optimally coordinated raw materials and a consistent inventive spirit form the recipe for success of a product that has remained on trend for over 100 years and has become an integral part of architecture.

Tradition and Innovation – We Build on Strong Values



As a Swiss family-owned company, we think in terms of generations and have been doing what we do best for decades: With curiosity, passion and commitment, we create innovative and durable fibre cement products for facades, roofs, interior finishing and gardens.

Today, the Swisspearl Group is headquartered in Niederurnen, in the heart of the Swiss Alps. One of the first production facilities for fibre cement was founded here in 1903. The success story of our fibre cement began in Vöcklabruck in 1894. The place where it was invented by Ludwig Hatschek.

Today, the traditional production process is combined with state-of-the-art technology. We are proud of our leading position in the innovation and technology of this material, which is used worldwide in the design of architecture and living spaces.

Swisspearl stands for Swiss quality – worldwide.



It is our goal to become the number one in the field of high-quality fibre cement. By always aiming that little bit higher, with a mindset that is always ahead of the game, and achievements that always go a little further than others on the market, we transform living spaces into dream homes.

However, there is much more to over 125 eventful financial years, namely pioneering spirit, expertise and the courage to break new ground – for a stable future.



Every step counts in construction projects. This also applies to manufacturers. Thanks to the long tradition behind our group of companies, experienced employees are able to produce high-quality fibre cement products from optimally coordinated raw materials with expertise, precision and craftsmanship. The interplay between tradition and innovation has made the use of fibre cement products possible in buildings all over the world for over 100 years.



SWISSPEARL
PRODUCT RANGE



ROOF SLATES

Fibre cement slate offers various advantages: It is made from environmentally friendly, recyclable raw materials. Thanks to its low weight, roofing work can be carried out very quickly and efficiently. A special coating makes roofs particularly weather-resistant and ideally suited to changing climatic conditions.

JUTLAND SLATES



Swisspearl Jutlad Slate is a fibre cement roofing slate with a smooth surface and smooth edges. The flat overlap profile creates a particularly sleek appearance. The grey based panels are available in two timeless colours.

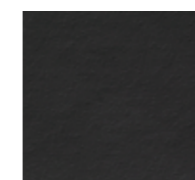
Manufactured to the highest European standards, the slate combines light weight and durability. It is easy to install and offers the ideal economical alternative to natural slate.



Family House Pulečný, Pulečný, Czechia. Architect: Domesi s.r.o., Prague, Czechia. Photographer: Lina Németh, Czechia.



Slate Black



Slate Graphite

Technical data

Panels

Base panel: Grey based.
Coating: Opaque.

Panel format (width × length)
300 x 600 mm, 600 x 600 mm,
panel thickness 4 mm.

For a detailed summary of the sizing and color options, please refer to our website.

Colours

2 standard colours

Roof pitch

Can be used from an inclination of 25 degrees. (Should you need to use from an inclination of 20 degrees, please contact our technical department.)

Panel weight m²

Due to the different conditions depending on the format and country-specific requirements, this information can be found in the technical data sheets.

Mounting

Nailed or fastened with hooks.

Technical data

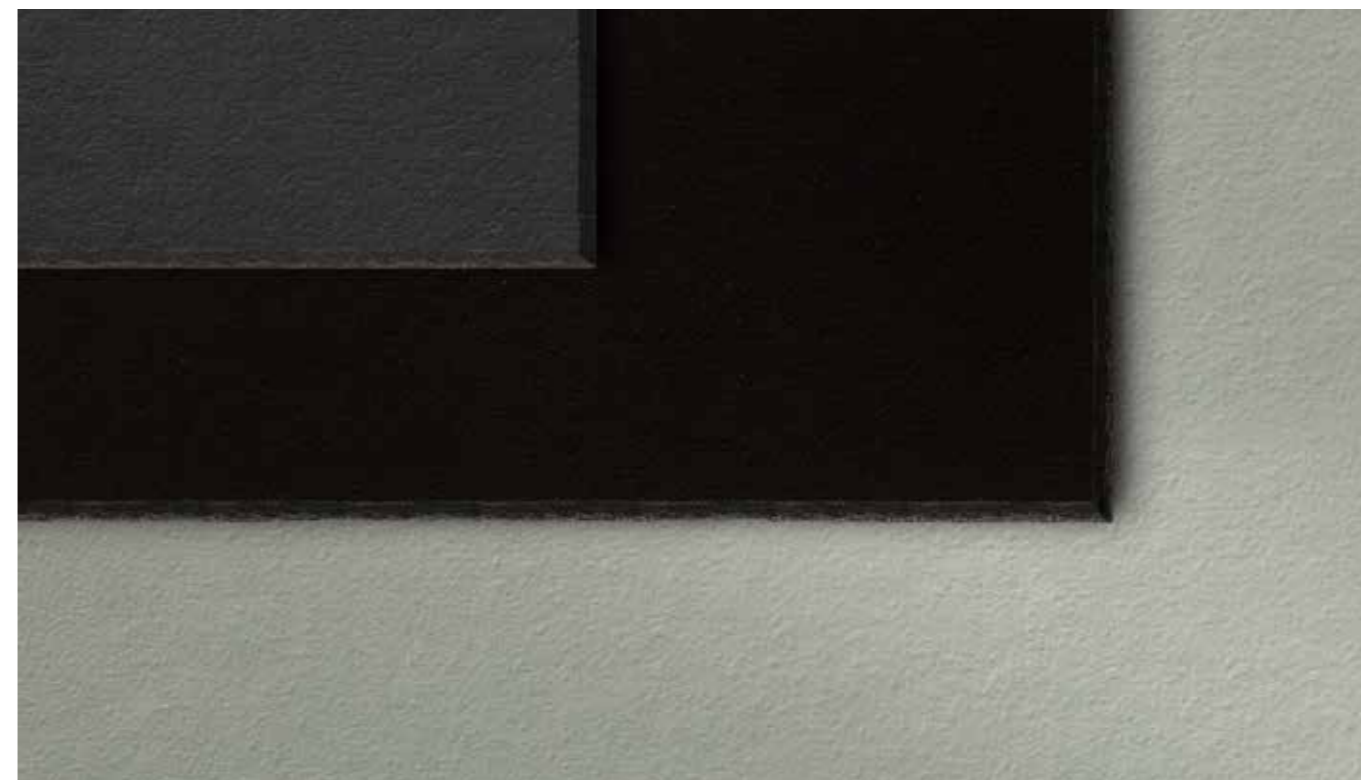
Detailed information can be found in the DIM – “Design and Installation Manual”.

MOORLAND SLATES



Swisspearl Moorland Slate is a roofing slate with a smooth surface and dressed edges that capture the elegance of a slate roof. Once laid, it creates a harmonious, flat appearance that lends any roof a high-quality simplicity. Smooth Dressed also offers all the advantages of fibre cement: lightweight, fireproof, weather-resistant and durable.

The grey based panels are available in one authentic, dark slate shades.



Slate Black

Technical data

Panels

Base panel: Grey based.
Coating: Opaque.

Panel format (width × length)
300 × 600 mm, 600 × 600 mm,
panel thickness 4 mm.

For a detailed summary of the sizing and color options, please refer to our website.

Colours

1 standard colour.

Roof pitch

Can be used from an inclination of 25 degrees. (Should you need to use from an inclination of 20 degrees, please contact our technical department.)

Panel weight m²

Due to the different conditions depending on the format and country-specific requirements, this information can be found in the technical data sheets.

Mounting

Nailed or fastened with hooks.

Technical data

Detailed information can be found in the DIM – “Design and Installation Manual”.

WESTERLAND SLATE

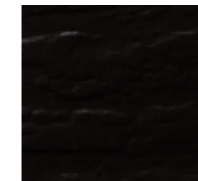


Swisspearl Westerland Slate is a roof tile with a rough surface and dressed edges that combines the lively look of slate with the advantages of fibre cement: long durability and high weather resistance with an incredibly light weight. Compared to a natural stone roof, installation is a breeze.

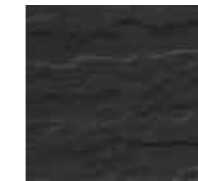
The grey based panels are available in two authentic, dark slate shades with opaque coating. Their textured structure emphasises their natural and expressive character.



Black Rock, Jaworze, Poland. Architect: Mus Architects, Katowice, Poland. Photographer: Tomasz Zakrzewski, Bytom, Poland.



Slate Black



Slate Graphite

Technical data

Panels

Base panel: Grey based.
Coating: Opaque.

Panel format (width × length)
242 x 500 mm, 300 x 600 mm,
492 x 500 mm, 600 x 600 mm,
panel thickness 4 mm.

For a detailed summary of the sizing and color options, please refer to our website.

Colours

2 standard colours.

Roof pitch

Can be used from an inclination of 25 degrees. (Should you need to use from an inclination of 20 degrees, please contact our technical department.)

Panel weight m²

Due to the different conditions depending on the format and country-specific requirements, this information can be found in the technical data sheets.

Mounting

Nailed or fastened with hooks.

Technical data

Detailed information can be found in the DIM - "Design and Installation Manual".

CORRUGATED SHEETS

Unmistakable design language, curved lightness: corrugated sheets and their matching accessories from Swisspearl set accents. Their simple design has made them a modern classic in roof and facade design - a perfect choice for all agricultural and industrial buildings.



B5



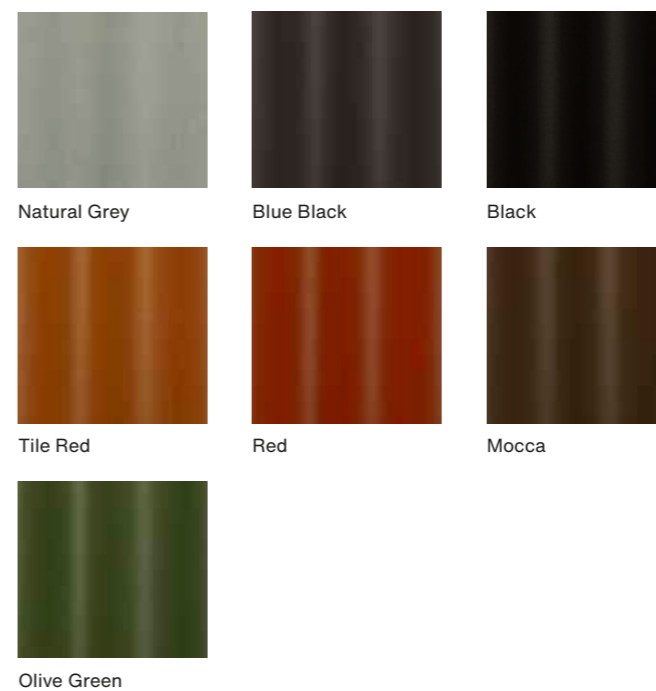
Swisspearl B5 is a corrugated fibre cement board with timeless aesthetics and durable quality. A colour spectrum of saturated, natural tones and subtle shades of grey to black allows for versatile use.

B5 offers a durable and economical solution for large roof areas in particular. The corrugated sheets are quick to install and easy to replace if damaged.

They are weather-resistant, storm-proof and the diffusion-open material minimises condensation. In addition, noise is minimised in the event of weather influences such as wind, rain or hail, which contributes significantly to animal welfare when roofing stables.



United Kingdom.



Technical data

Panels
Base panel: Grey based.
Coating: Opaque.

Panel format
Wave height 36 mm,
W130-8 1020 x L mm,
W130-9 1150 x L mm,
panel thickness 6 mm.

For a detailed summary of the sizing and color options, please refer to our website.

Colours
6 standard colours and natural grey.

Roof pitch
Can be used from an inclination of 7 degrees.

Panel weight m²
11,4 kg/m²

Mounting
Visible on wooden or steel substructure:
Screws with painted heads.

Technical data
Detailed information can be found in the "DIM - Design and Installation Manual".

CEMSIX

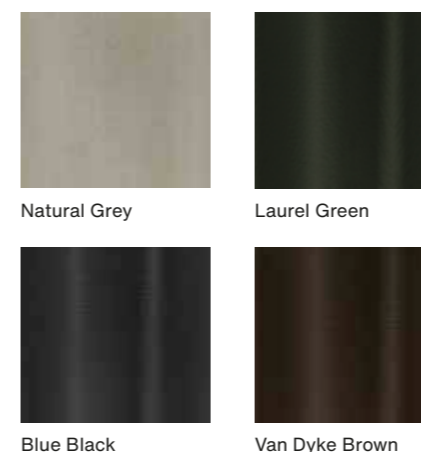


Swisspearl Cemsix is a corrugated fibre cement roof panel with a classic, timeless look. It is available in three dark, saturated colours and a natural shade of grey. It really comes into its own on large roof surfaces and facades. Strikingly light appearance and installation with unbeatable cost efficiency.

The corrugated sheet simply combines many advantages such as low weight, long durability, weather resistance, low noise and fire resistance into an economical, high-quality product.

Cemsix ventilation accessories have been designed to accommodate differing approaches to ventilation according to the application the building will be used for. The ventilation options allow compliance with the latest requirements for animal welfare.

Swisspearl corrugated sheets is a high-quality fibre cement product used as roofing and cladding on agricultural and industrial buildings.



Natural Grey

Laurel Green

Blue Black

Van Dyke Brown

Technical data

Panels

Base panel: Grey based.
Coating: Opaque

Panel format

Wave height 54 mm,
format 1086 x L mm,
panel thickness 6 mm.

For a detailed summary of the sizing and color options, please refer to our website.

Colours

3 standard colours and natural grey.

Roof pitch

Can be used from an inclination of 7 degrees.

Panel weight m²

14,0 kg/m²

Mounting

Visible on wooden or steel substructure:
Screws with painted heads.

Technical data

Detailed information can be found in the DIM – “Design and Installation Manual Largo”.

B7



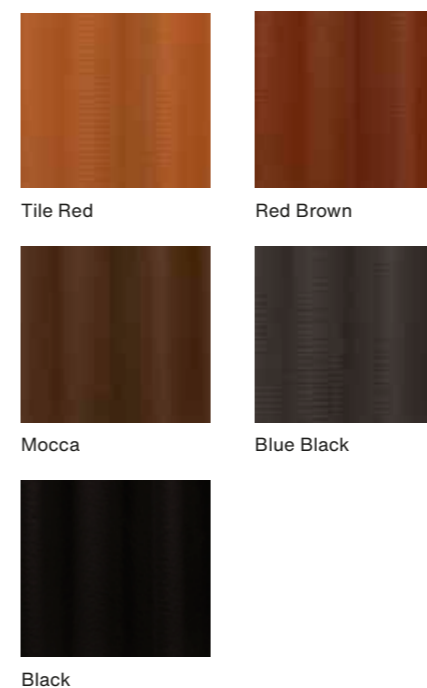
Swisspearl B7 is a corrugated fibre cement roof panel with a time-less design. The relatively flat wave height gives even large roof surfaces a harmonious overall appearance. Simple and beautiful.

Thanks to its product properties, B7 cuts a fine figure even after decades. It is weather-resistant, fireproof and particularly light and durable.

The panel is available in three warm, vibrant colours and two dark shades.



Hjallerup, Denmark. Photographer: Nibe Fotograferne, Nibe, Denmark.



Tile Red

Red Brown

Mocca

Blue Black

Black

Technical data

Panels

Base panel: Grey based.
Coating: Opaque

Panel format

Wave height 54 mm,
maximum usable format 1100 x 570 mm,
panel thickness 6 mm.

For a detailed summary of the sizing and color options, please refer to our website.

Colours

5 standard colours.

Roof pitch

Can be used from an inclination of 14 degrees.

Panel weight m²

Due to the different conditions depending on the format and country-specific requirements, this information can be found in the technical data sheets.

Mounting

Visible on wooden or steel substructure:
Screws with painted heads.

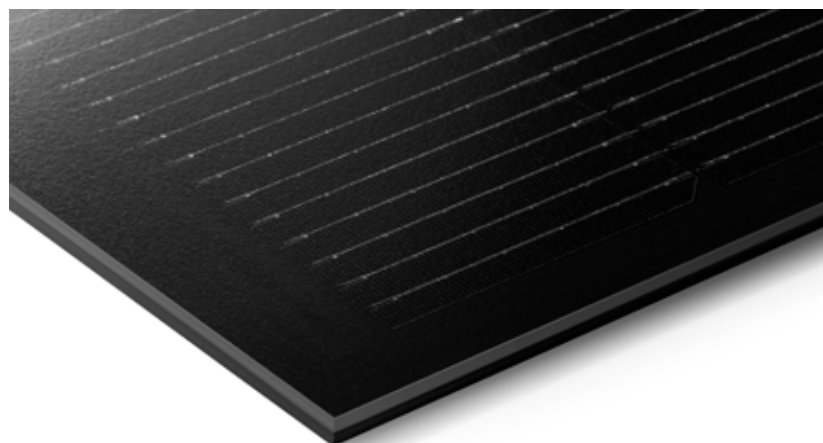
Technical data

Detailed information can be found in the DIM - "Design and Installation Manual Largo".

It has finally arrived: the possibility of integrating functional and highly efficient solar roofs into the building envelope as an aesthetic design element.

SOLAR

SUNSKIN ROOF LAP

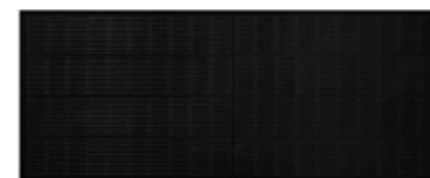


Aesthetic, first-class and highly efficient. Sunskin Roof Lap is the sustainable system solution for solar installations on building roofs. With their frameless, flat shape, Sunskin Roof Lap solar modules blend perfectly into the roof landscape.

They are suitable for almost any roof shape and their frameless form prevents dirt accumulating at the edges. A combination of supplementary panels for the Sunskin Roof Lap system thus enables an aesthetic and sustainable roof design.



Winery Letten, Meggen, Switzerland. Architect: Löscher Architektur GmbH, Meggen, Switzerland. Photographer: Meraner & Hauser OHG/SNC, Bolzano, Italy.



XL Modul



L Modul



M Modul

Technical data

Modul structure
Glass - glass

Panel format
XL: External module dimensions
1940 × 857mm

L: External module dimensions
1380 × 857mm

M: External module dimensions
1010 × 857mm

For a detailed summary of the sizing and color options, please refer to our website.

Application
Solar in-roof system suitable for many roof shapes and pitches; straight or offset joints possible.

Technical data
Detailed information can be found in the "DIM - Design and Installation Manual".

Service

Warranty

Our products are manufactured to the highest quality standards. Production is subject to constant quality controls. This includes tests in third-party facilities, as well as in our in-house laboratories. If delivered products do not provide the specified performance, the warranty is valid, which covers the function of the panels and accessories. The warranty assumes that the instructions in the latest edition of the DIM - Design and Installation Manual have been followed.

Material properties

The printed colour shades shown may differ from the original colour shades. The sample panels should be used for the exact identification and colour coordination of neighbouring building parts. Fibre cement panels owe their unique character to natural ingredients, among other things. Slight variations between the different production batches can therefore not be ruled out.

Differences in texture and colour between the individual panels are a natural part of the production characteristics and underline the vibrant character of the facade effect. Such colour differences are not covered by the warranty.

We are here for you

With comprehensive consulting and service offers, we specifically address the needs of building owners, architects and planners in order to jointly develop qualified solutions. We support you with comprehensive expert advice, detailed documentation, technical manuals and the Swisspearl Architecture Magazine, which has become a renowned publication.

Our high-quality fibre cement products combine outstanding quality and durability to create solutions for aesthetic building envelopes and valuable living spaces. Our dedicated and competent employees are always there for you, your ideas and questions. We look forward to implementing joint projects.



Inspiration from the Swisspearl Architecture Magazine

Numerous construction projects are carried out with Swisspearl products around the world every year. Architecture can and must do a lot. Climate change and the importance of sustainable construction are a challenge for everyone involved in the planning and realisation of a building.

The building envelope of the future enables maximum energy efficiency. With the rear-ventilated facade made of fibre-cement panels, Swisspearl offers an environmentally-friendly building shell. In our Swisspearl Architecture Magazine, we present architecturally unique and outstanding construction projects around the globe every year.

Get inspired – [swisspearl.com](https://www.swisspearl.com)







Swisspearl GB Ltd

Unit 1a, Birchwood One Business Park
Birchwood, Warrington
Cheshire WA3 7GB
United Kingdom
+44 (0)203 372 2300
info@uk.swisspearl.com

swisspearl.com